



# Integrating Landscape Conservation and Military Readiness

Ryan Orndorff,  
Director, DoD Natural Resource Program  
North American Wildlife & Conservation Conference  
Norfolk, VA – March 28 2018



# The Military Landscape

## Critical Assets Supporting Military Readiness



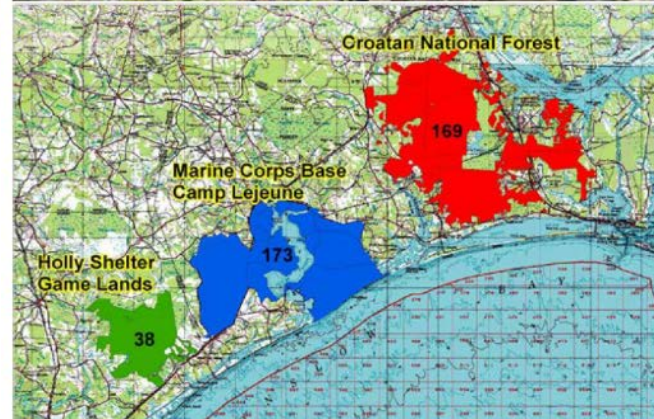
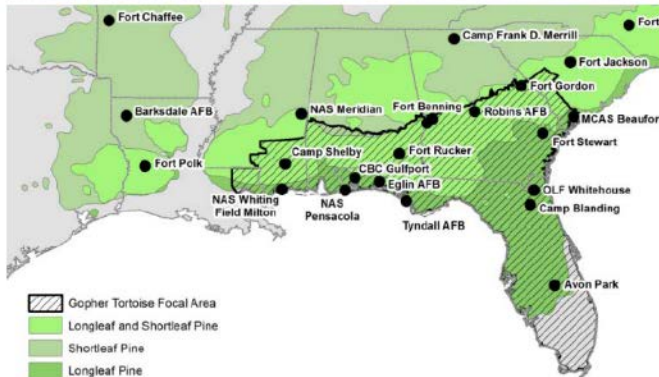








# Conservation Role





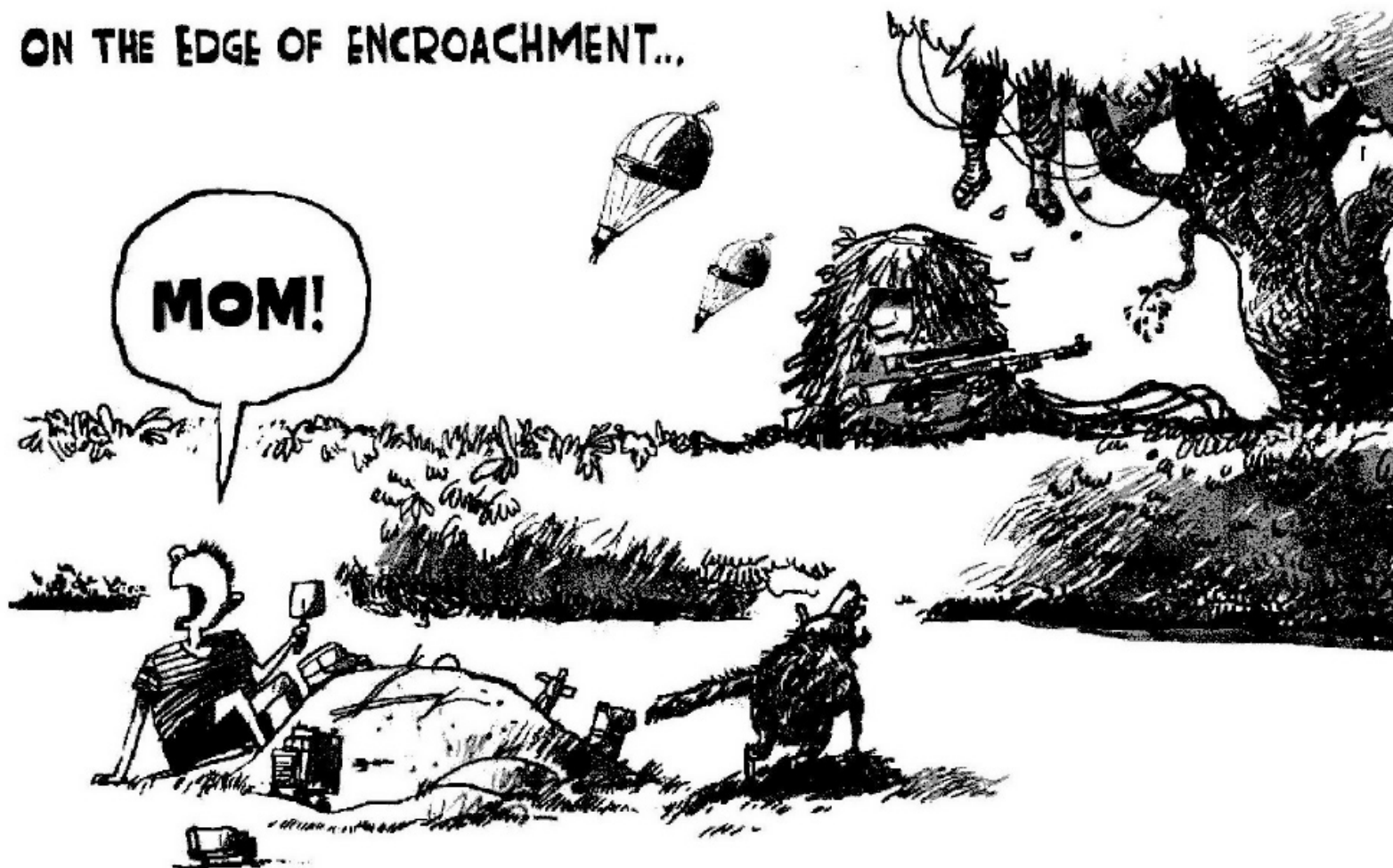
# Changing Landscapes

## Nature of Encroachment



ON THE EDGE OF ENCROACHMENT...

MOM!



**CMTERRY**  
NORTHWEST FLORIDA LINE 1000 3.04





# Changing Landscapes

## Conflict to Cooperation





# Changing Landscapes

## Understanding the Connections



The Department of Defense's Readiness and Environmental Protection Integration (REPI) Program is a key tool for promoting innovative and land conservation partnerships that benefit national defense, neighboring communities and the environment.

Parachute training is halted when housing developments are built near drop sites



**80%** of military bases have surrounding development that is higher than the national average

Realistic combat training, pristine test environments, and operational capability are keys to keeping our service members safe. However, encroachment issues are creating obstacles that threaten military activities.

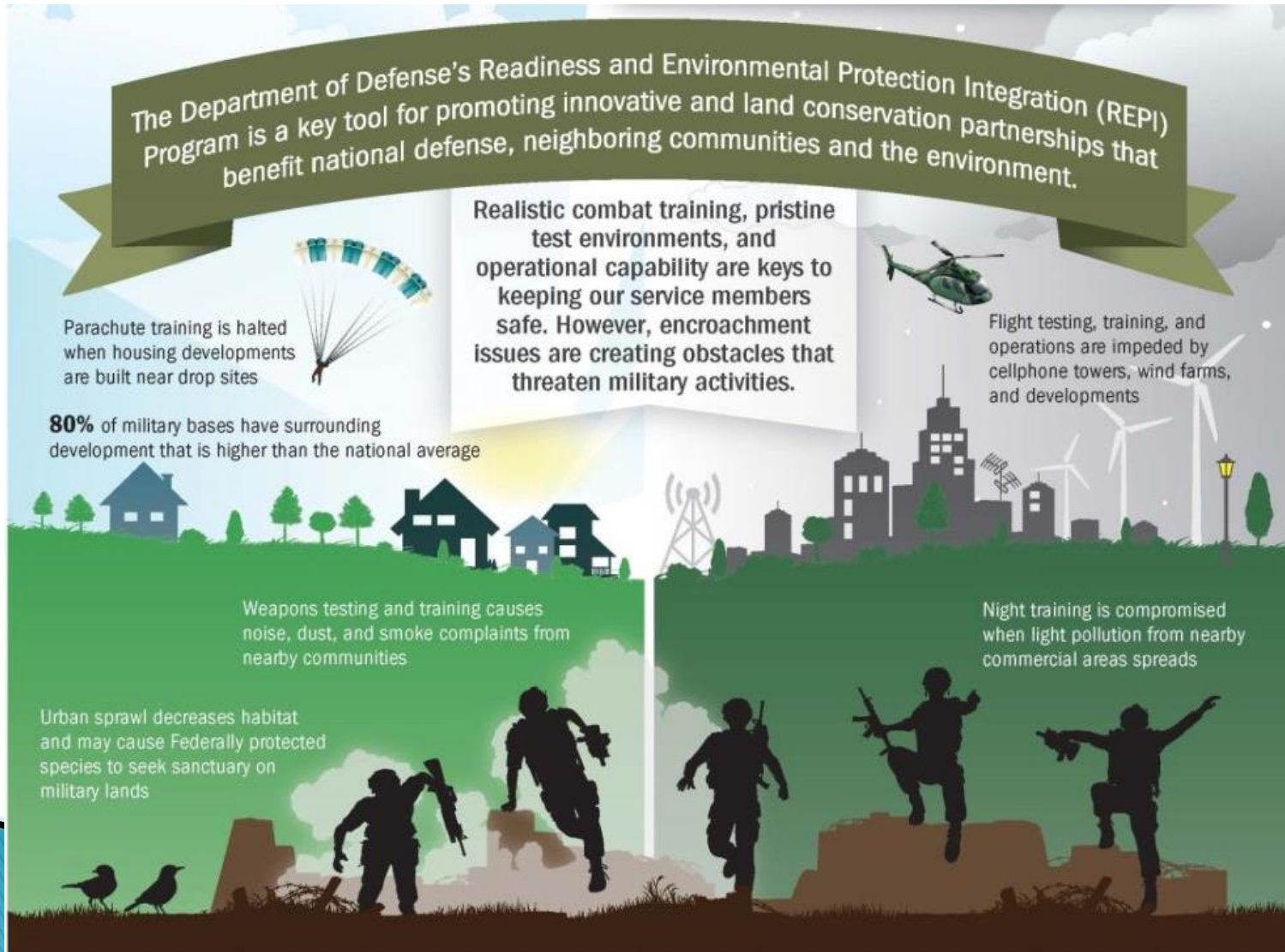


Flight testing, training, and operations are impeded by cellphone towers, wind farms, and developments

Weapons testing and training causes noise, dust, and smoke complaints from nearby communities

Urban sprawl decreases habitat and may cause Federally protected species to seek sanctuary on military lands

Night training is compromised when light pollution from nearby commercial areas spreads

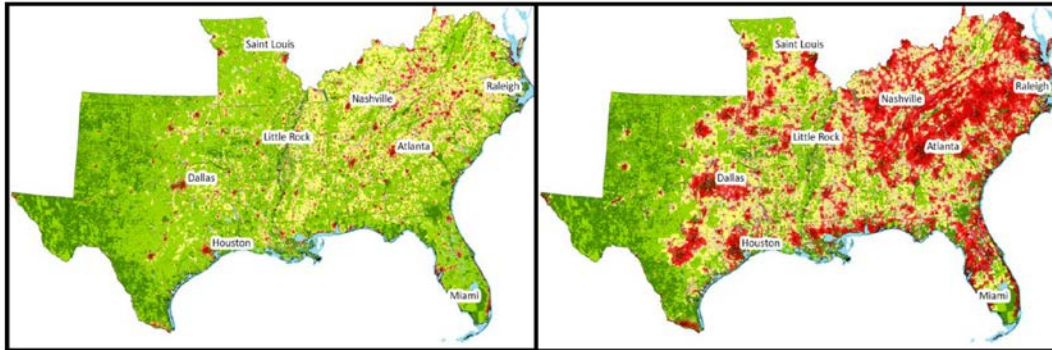






# Changing Landscapes

## Future Challenges



1940

2030



Source: Center for Quality Growth and Regional Development, Georgia Tech



### Potential Economic Viability of Wind

Acquisition, Technology and Logistics

Exponential growth driven by emerging technology that will allow taller structures, thus opening new areas (in brown, below)



Difference of Developable Land Area at 140m - 110m Hub Height

35% or Higher Gross Capacity Factor

2020 - 2014 Turbine Technology

Area (sq km)

0 - 100

100 - 200

200 - 300

300 - 400

Land exclusions

Best sources: NREL, National Renewable Energy Laboratory

2014 Report on the Potential for the Expansion of the Wind Energy Industry

October 2014

NREL

6/20/2017

6





# REPI

## Readiness and Environmental Protection Integration Program

### BUFFER PARTNERSHIP LOCATIONS



Ft. Wainwright  
 NAVMAG Indian Island  
 NAS Whidbey Island  
 OLF Coupeville  
 NB Kitsap  
 Fairchild AFB  
 Camp Rilea  
 Joint Base Lewis-McChord  
 NWSTF Boardman  
 Fort Harrison, Limestone Hills

Beale AFB  
 Travis AFB  
 NAS Fallon  
 Camp Williams  
 NAS Lemoore  
 Buckley AFB  
 Ft. Carson  
 Ellsworth AFB  
 Camp Ripley

Camp Roberts  
 Camp San Luis Obispo  
 Vandenberg AFB  
 NB Ventura County  
 MCB Camp Pendleton  
 MCAS Miramar  
 NB Coronado  
 Camp Michael Monsoor

U.S. Army Garrison Hawaii  
 Joint Base Pearl Harbor-Hickam  
 Wahiawa Annex

NAWS China Lake  
 NO Flagstaff  
 MCAGCC Twentynine Palms  
 El Centro Range Complex

Ft. Huachuca  
 Ft. Bliss  
 Ft. Hood  
 Camp Swift  
 NAS JRB New Orleans  
 NCBC Gulfport  
 Joint Base San Antonio (Camp Bullis)

Ft. Riley  
 Ft. Knox  
 Ft. Campbell  
 Ft. Bragg  
 Ft. Bragg USASOC  
 Ft. Gordon  
 Robins AFB  
 Ft. Benning  
 Tyndall AFB  
 Eglin AFB  
 NAS Whiting Field  
 NAS Pensacola  
 NAS Meridian  
 Camp Shelby  
 NAS JRB New Orleans  
 NAS Pensacola  
 NAS Whiting Field  
 Eglin AFB  
 Tyndall AFB  
 Ft. Benning  
 Robins AFB  
 Ft. Gordon  
 Ft. Bragg  
 Ft. Bragg USASOC  
 Ft. Campbell  
 Ft. Knox  
 Ft. Riley  
 Ft. Carson  
 Buckley AFB  
 NAS Lemoore  
 Travis AFB  
 Beale AFB  
 NAS Fallon  
 Camp Williams  
 NAS Whidbey Island  
 OLF Coupeville  
 NB Kitsap  
 Fairchild AFB  
 Camp Rilea  
 Joint Base Lewis-McChord  
 NWSTF Boardman  
 Fort Harrison, Limestone Hills  
 Camp Ripley  
 Ellsworth AFB  
 Ft. Wainwright  
 NAVMAG Indian Island  
 NAS Whidbey Island  
 OLF Coupeville  
 NB Kitsap  
 Fairchild AFB  
 Camp Rilea  
 Joint Base Lewis-McChord  
 NWSTF Boardman  
 Fort Harrison, Limestone Hills  
 Camp Ripley  
 Ellsworth AFB  
 Ft. Riley  
 Ft. Knox  
 Ft. Campbell  
 Ft. Bragg  
 Ft. Bragg USASOC  
 Ft. Gordon  
 Robins AFB  
 Ft. Benning  
 Tyndall AFB  
 Eglin AFB  
 NAS Whiting Field  
 NAS Pensacola  
 NAS Meridian  
 Camp Shelby  
 NAS JRB New Orleans  
 NCBC Gulfport  
 Joint Base San Antonio (Camp Bullis)

NSF Indian Head  
 MCB Quantico  
 Ft. A.P. Hill  
 Ft. Pickett  
 NAS Oceana  
 NSA Hampton Roads Northwest Annex  
 Joint Base Langley-Eustis  
 NWS Yorktown  
 NSF Dahlgren  
 NAS Patuxent River  
 Atlantic Test Ranges  
 Aberdeen Proving Ground

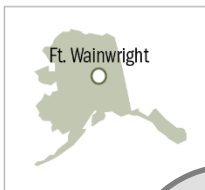


# REPI

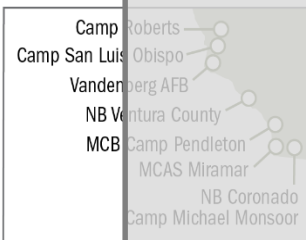
## Readiness and Environmental Protection Integration Program

### BUFFER PARTNERSHIP LOCATIONS

Under REPI, **\$662 million** in DoD funds have been leveraged with **\$639 million** in partner funds to protect over **466,000 acres** and sustain military readiness at **89 installations** in **30 states** through compatible land projects, landscape partnerships, and stakeholder engagement.



NAVMA  
Indian Island  
NB Kitsap  
Camp Rilea  
NAS Whidbey Island  
OLF Coupeville  
Fairchild AFB  
Joint Base Lewis-McChord



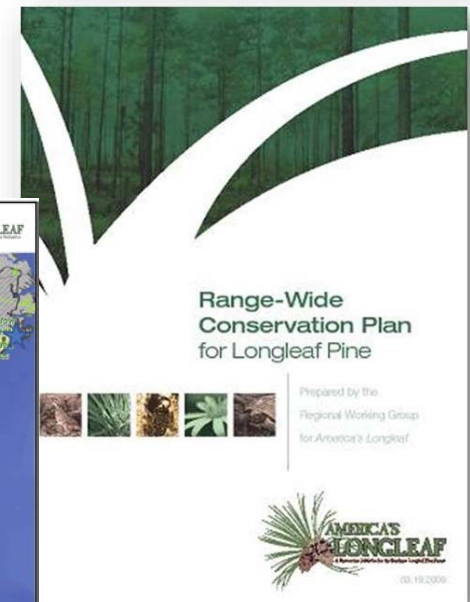
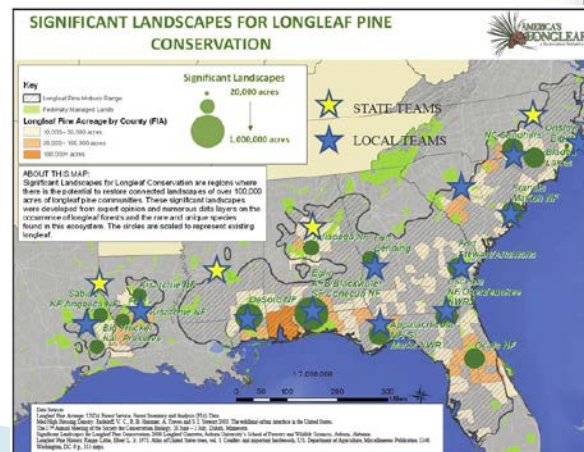




# Building Partnerships



Effective Working Relationships + Good Maps  
= Mutual & Multiple Benefits for all Partners



# SENTINEL LANDSCAPES



- The U.S. Departments of Agriculture, Defense and the Interior announced the Sentinel Landscapes Partnership in 2013, a nationwide federal, local and private collaboration dedicated to promoting natural resource sustainability
- The Partnership identifies shared interests within a landscape and coordinates mutually beneficial programs and strategies to preserve, enhance or protect habitat and working lands near military installations



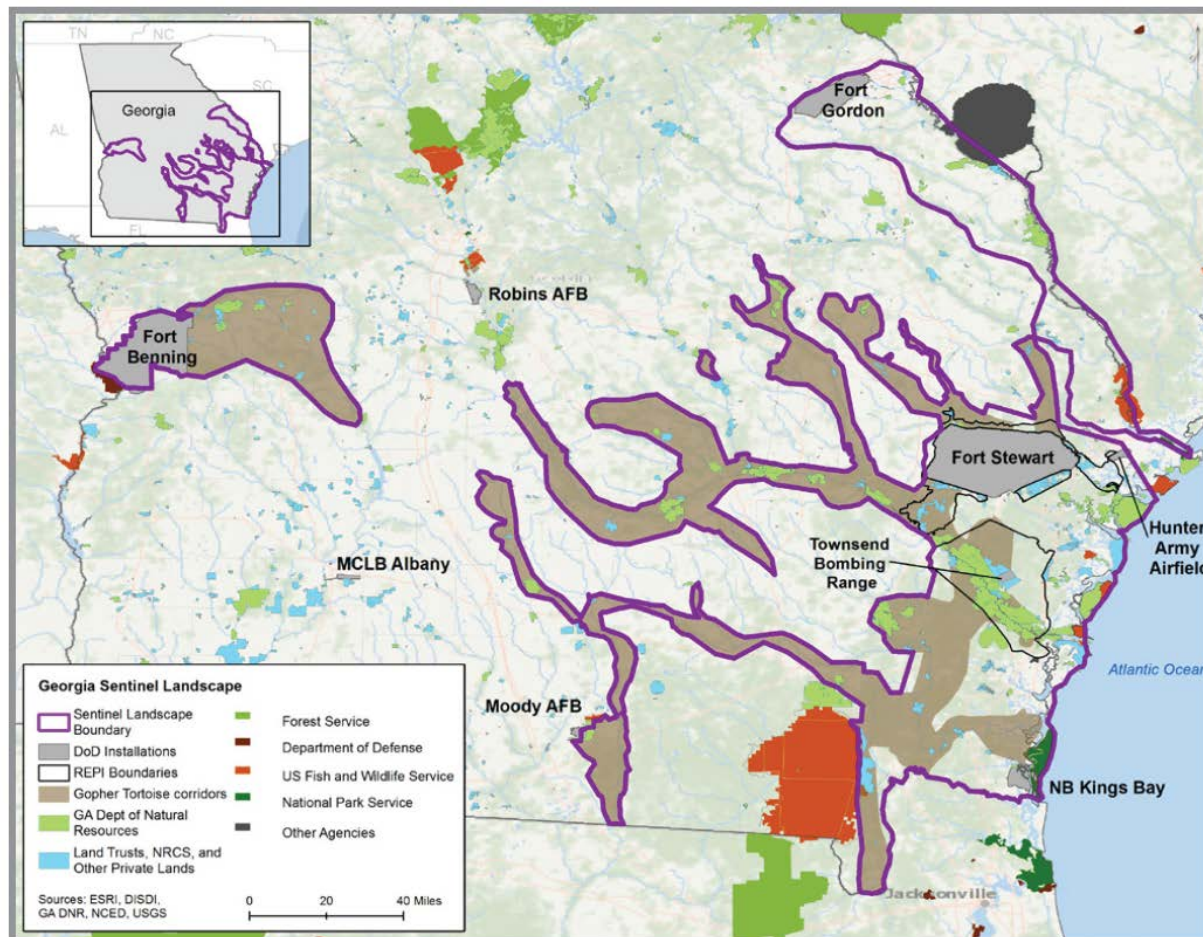




# Cooperation to Collaboration



## Georgia Sentinel Landscape

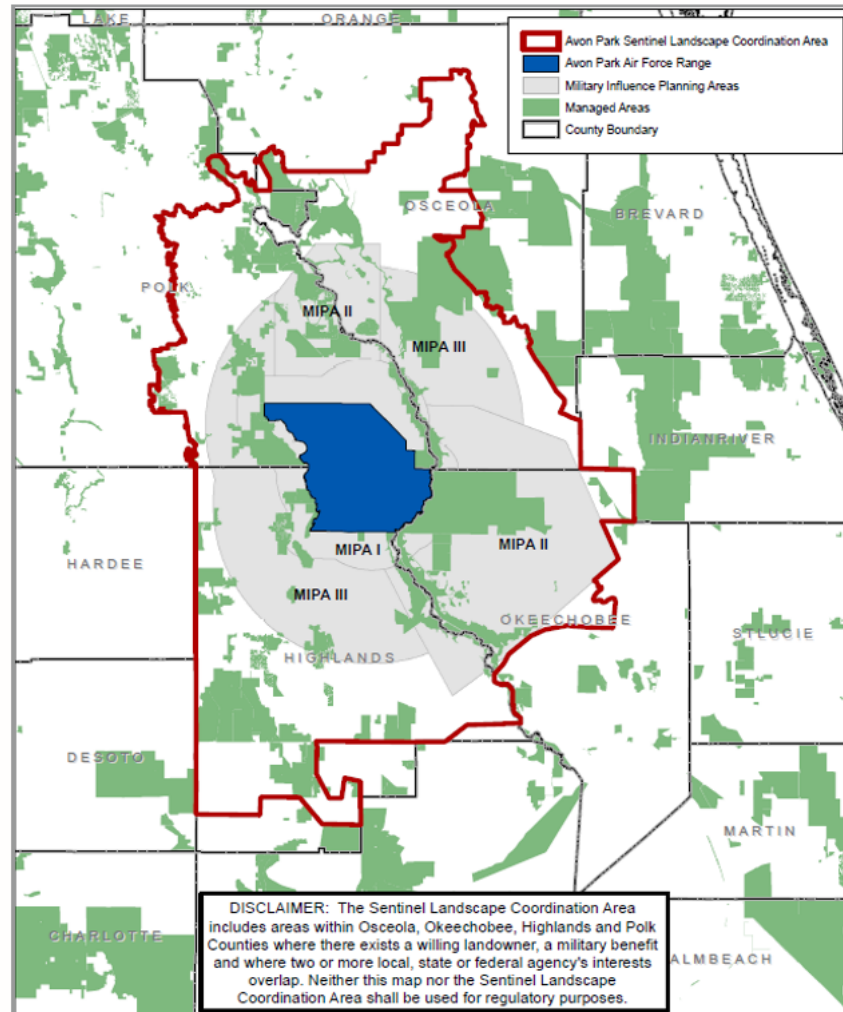




# Cooperation to Collaboration



## Avon Park Air Force Range







# Cooperation to Collaboration



## Eastern North Carolina





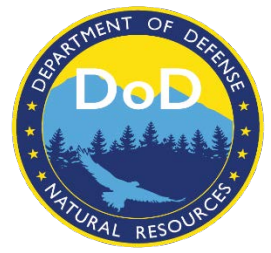
# Future of Collaboration



## ➤ Collaborative Conservation

- Considers a broad spectrum of stakeholder interests
- Provides relevant outcomes beyond “conservation outcomes”
- Allows for proactive and flexible implementation in the context of a stakeholders interest, mission, authorities and resources
- Aligns priorities and resources to achieve greater results
- Conservation without Conflict





# Questions?

Ryan Orndorff,  
Director, DoD Natural Resource Program  
North American Wildlife & Conservation Conference  
Norfolk, VA – March 28 2018