

SECAS CASE STUDIES

NORTH AMERICAN WILDLIFE AND NATURAL RESOURCES CONFERENCE

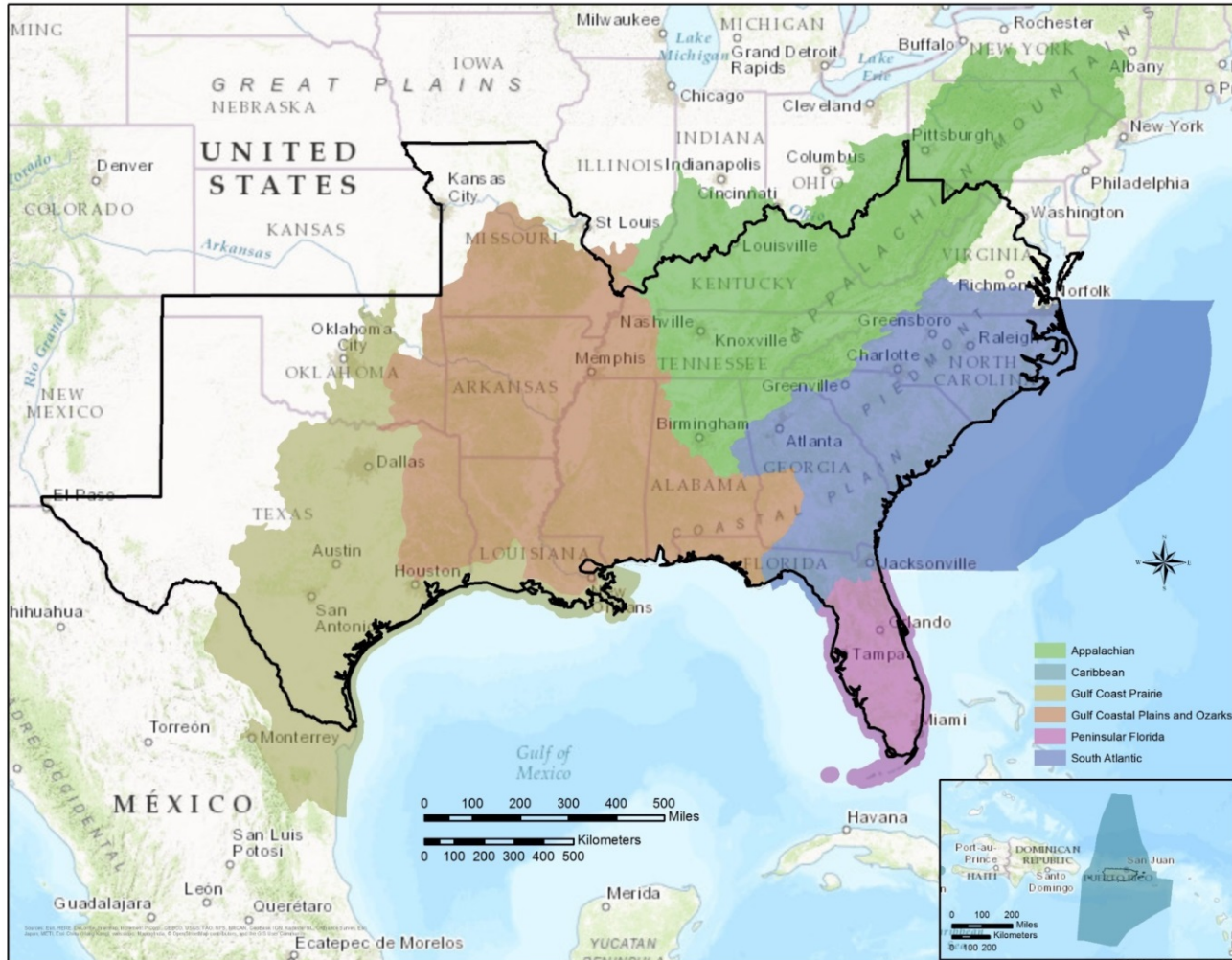
MARCH 28, 2018

CHRIS GOUDREAU

SECAS COORDINATOR

NORTH CAROLINA WILDLIFE RESOURCES COMMISSION

Conservation Opportunities



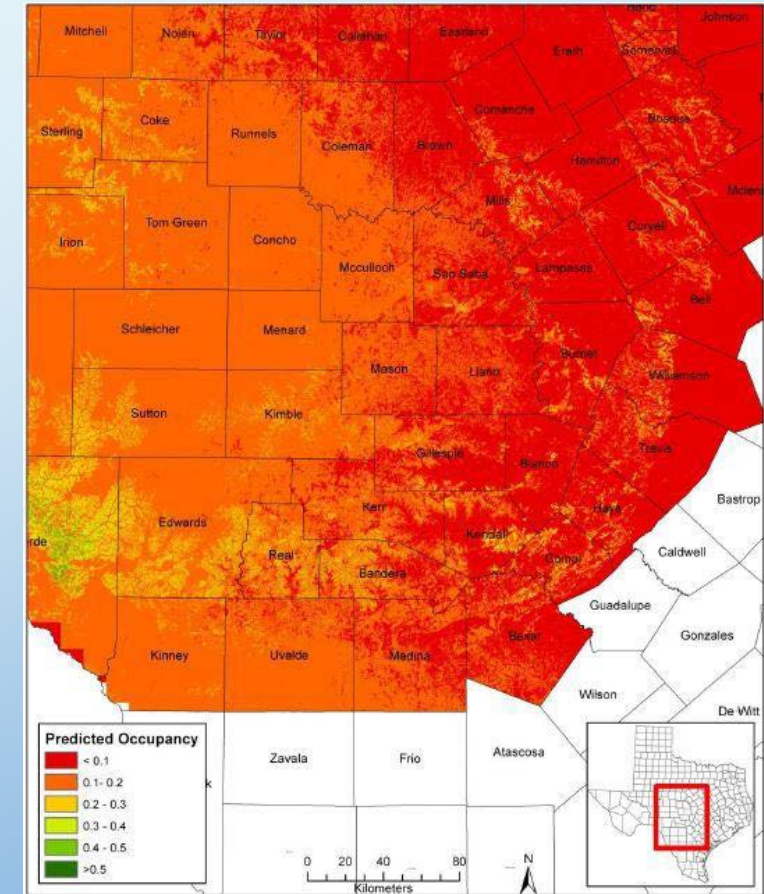
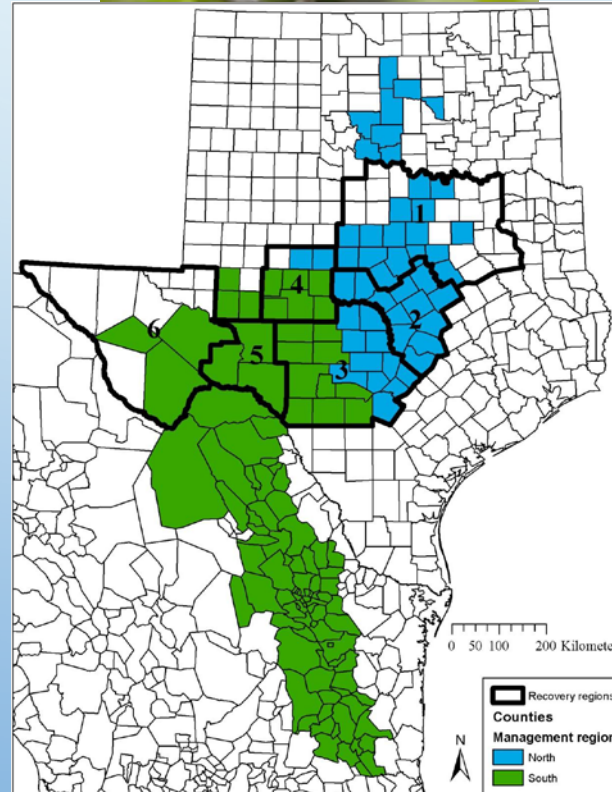
- Conserving and Connecting Lands
- Conserving and Connecting Waters
- Engaging Other Sectors
- Incorporating Future Conditions into Decision Making
- Integrating At-Risk Species
- Bringing In New Resources
- Integrating Social Sciences
 - Governance
 - Decision Frameworks

Part 1 – Early Successes

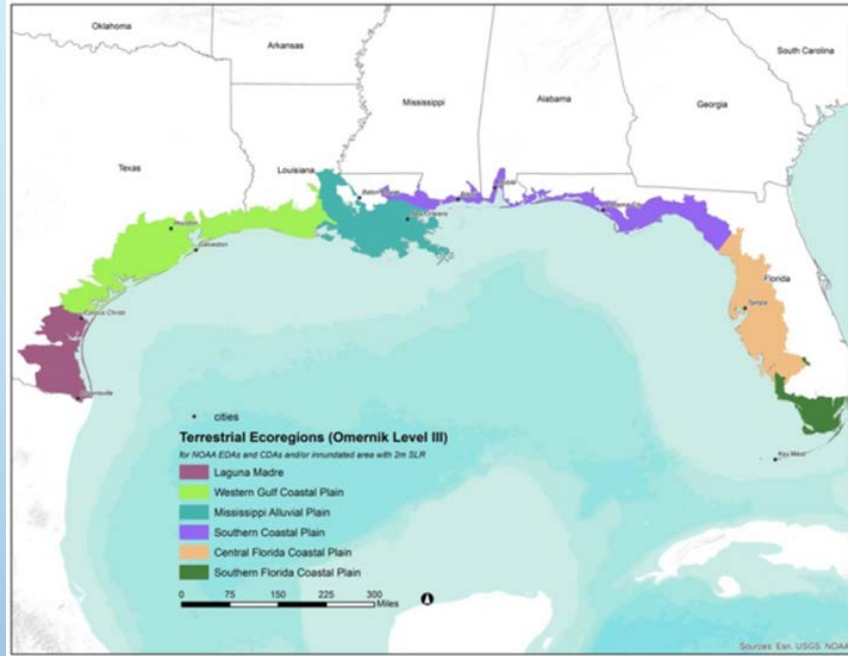
- Not all parts of the Blueprint were ready at the same time
- Started using the pieces for some early wins
- Many dozens of projects at the LCC level

GCP Conservation Framework for Grassland-Shrublands

- Project – 2012-2014
- Focal species: Black-capped Vireo, Bell's Vireo and Painted Bunting
 - Other managed species: Northern Bobwhite, White-tailed Deer and Wild Turkey
- Web-based spatial tool
 - synthesizes the current status, threats, conservation opportunities and habitat potential
 - enables users to identify locations that match their conservation priorities and determine BMPs to reach those goals



Gulf Coast Vulnerability Assessment



- Five states
- Project – 2012-2015
- Sensitivity and threats assessment to 2060
- Can be used to inform actions and link individual actions to support regional conservation and adaptation efforts



- Barrier Islands
 - Black Skimmer
 - Wilson’s Plover
 - Kemp’s Ridley Sea Turtle
- Tidal Emergent Marsh
 - Mottled Duck
 - Spotted Seatrout
 - Blue Crab
 - Clapper Rail
- Oyster Reefs
 - Eastern Oyster
 - American Oystercatcher
 - Red Drum
- Mangroves
 - Roseate Spoonbill

Gulf Coast Vulnerability Assessment



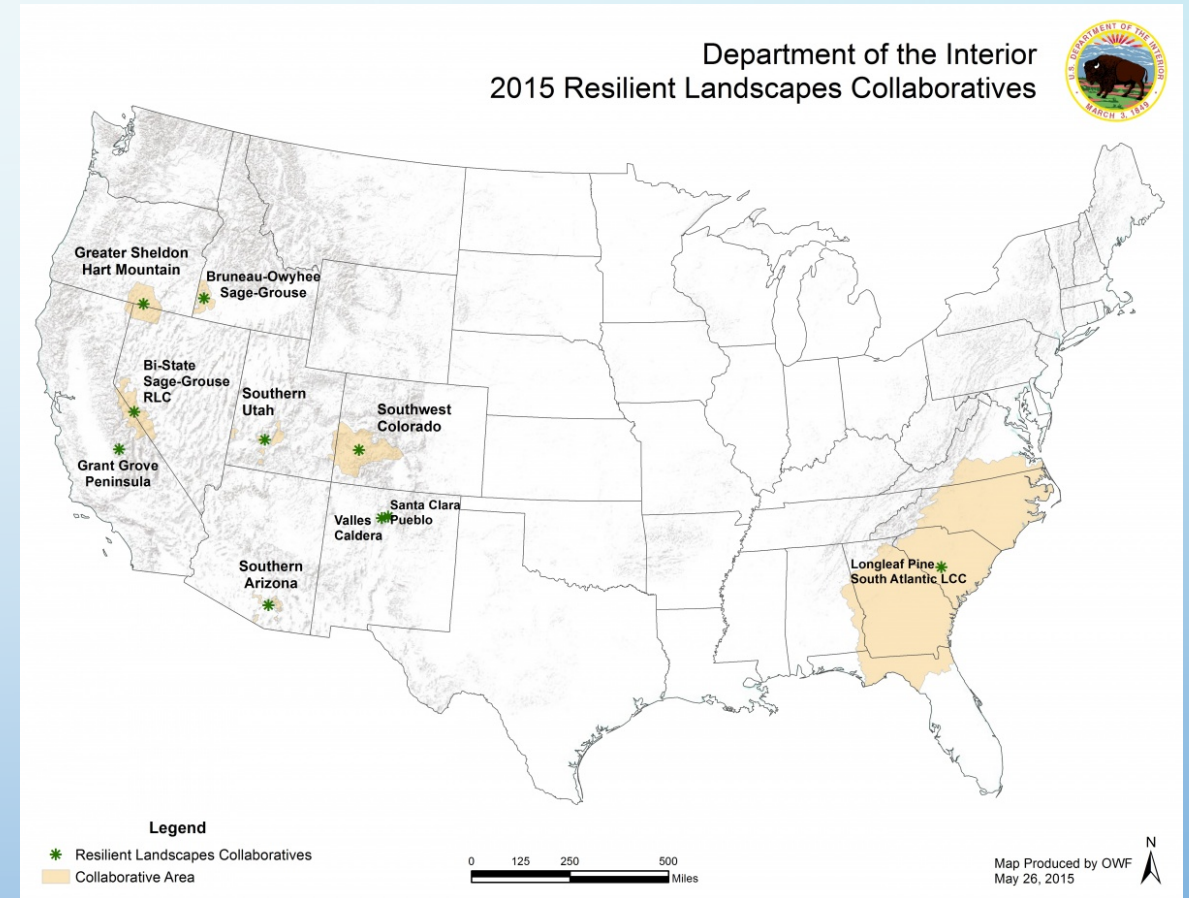
- Five states
- Project – 2012-2015
- Sensitivity and threats assessment to 2060
- Can be used to inform actions and link individual actions to support regional conservation and adaptation efforts



- Barrier Islands
 - Black Skimmer
 - Wilson's Plover
 - Kemp's Ridley Sea Turtle
- Tidal Emergent Marsh
 - Mottled Duck
 - Spotted Seatrout
 - Blue Crab
 - Clapper Rail
- Oyster Reefs
 - Eastern Oyster
 - American Oystercatcher
 - Red Drum
- Mangroves
 - Roseate Spoonbill

South Atlantic Blueprint Brings in Fire Money

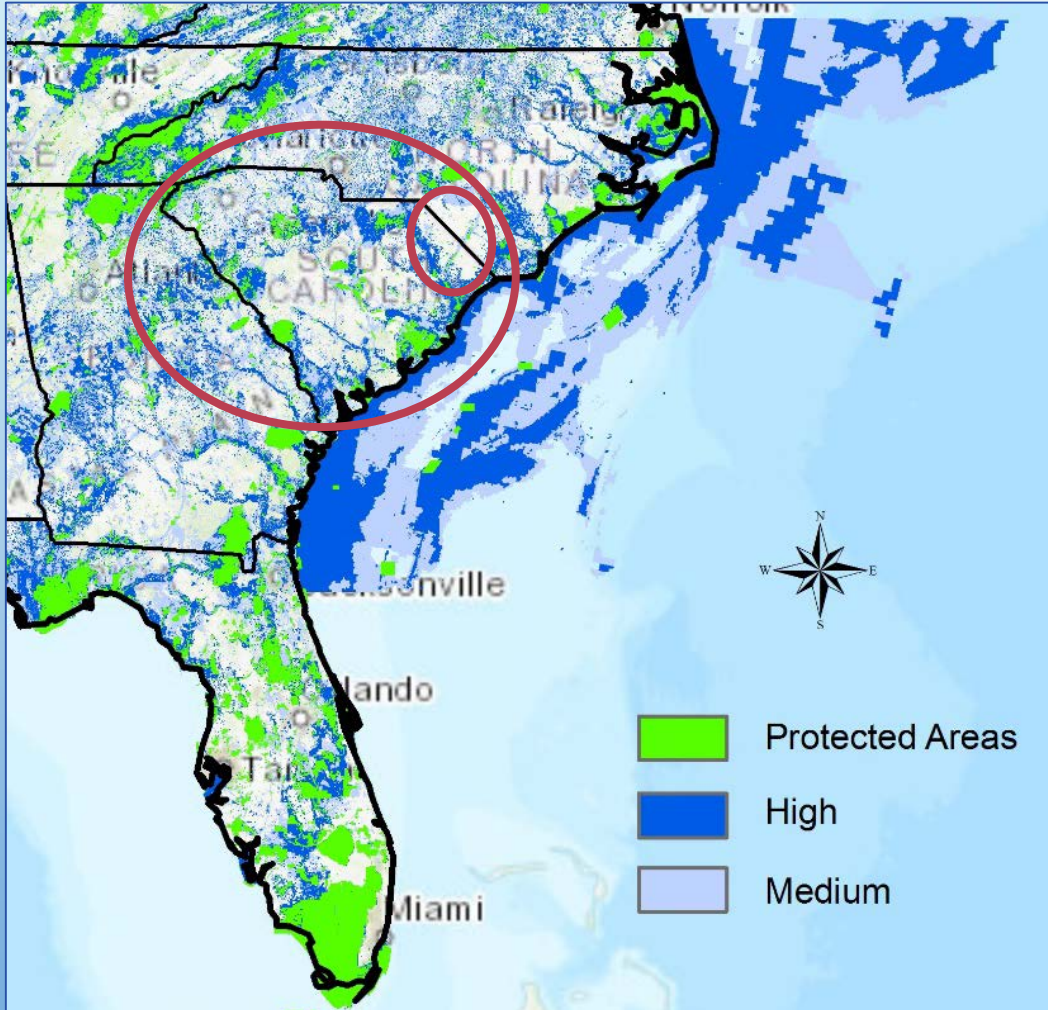
- DOI – Wildland Fire Resilient Landscapes
- Original focus was on western states
- Longleaf habitats across multiple states
- Project – 2015-2017
- Almost \$3 million



Part 2 – Thinking Bigger and More Connected

- Early successes resulted in more use over even larger areas
- Many of these projects needed the larger and more connected coverage of the full SECAS Blueprint
- Single state
- Multiple states
- Full SEAFWA region

South Carolina Examples



Major motivator

- Big state level funding source may happen soon
- Need shared priority areas across feds, state, and NGOs to help speed up process and prepare for new funding

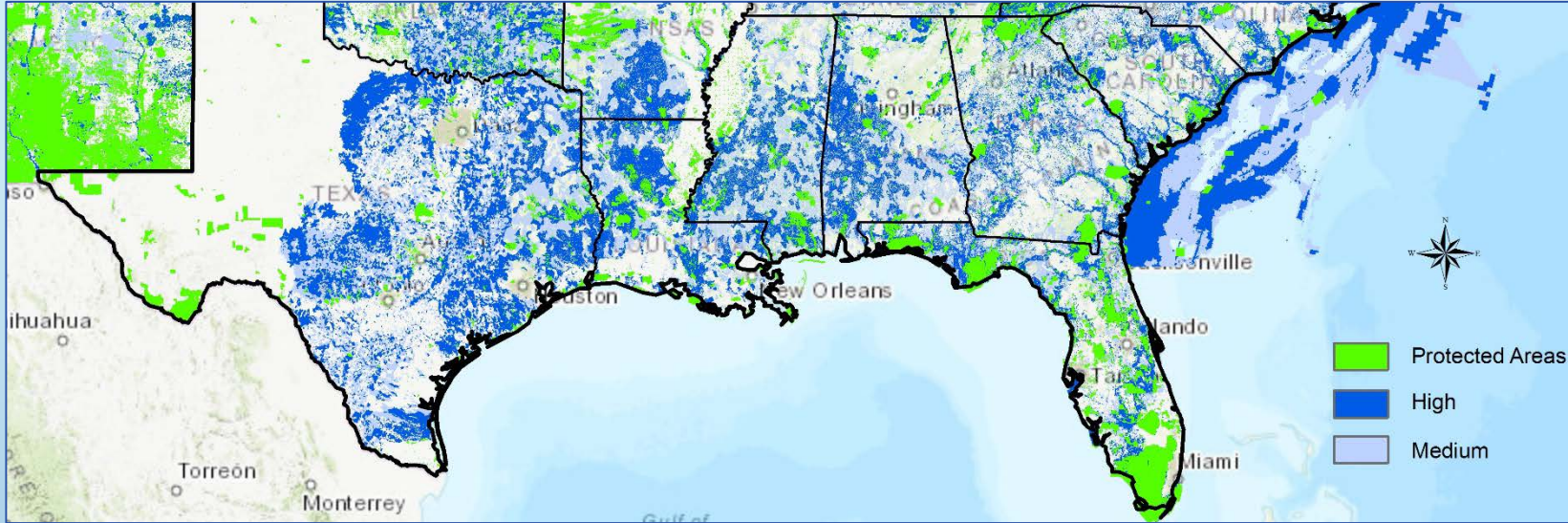
Entire state

- Update SWAP COAs and connect them w/ other states
- Align priority areas for SCDNR, TNC, FWS, and USFS

Upper Waccamaw

- Create shared focus areas for state, federal, county, land trusts, and other NGOs

Gulf Restoration



Major motivator

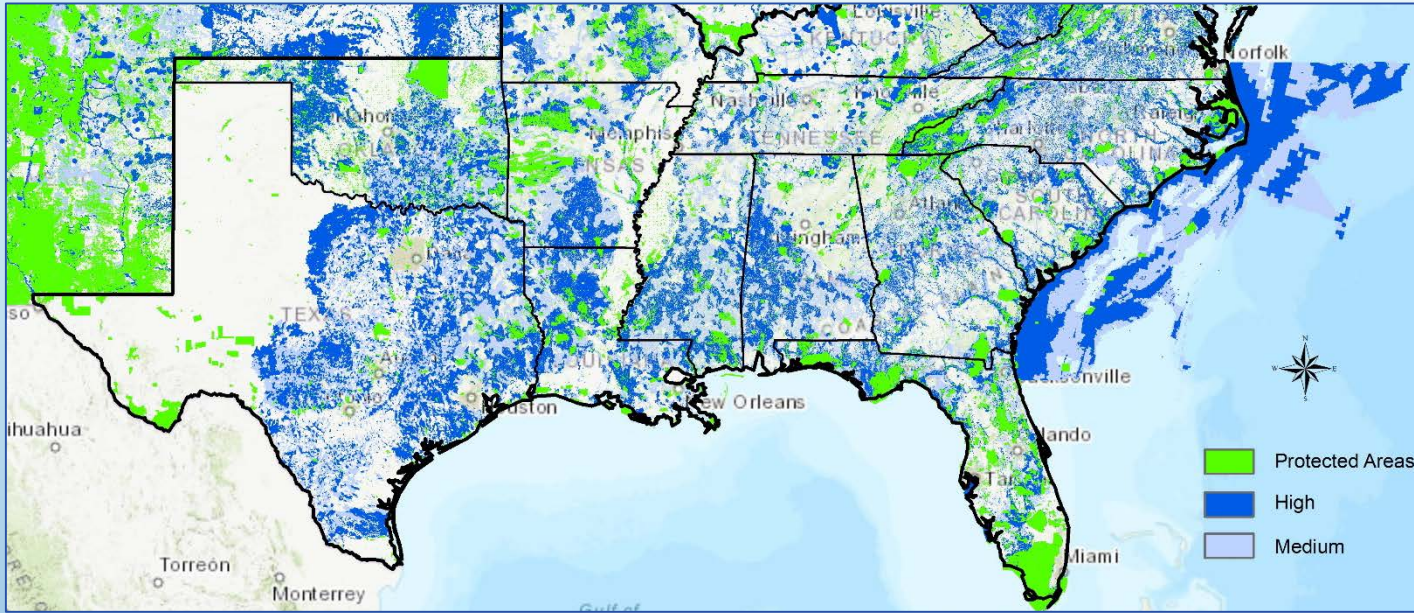
- Dedicated cross-state funding source from oil spill
- Many state wildlife agencies are not the lead state entity at the table

Blueprint uses

- Integrating state, federal and NGO priorities
- 5 Southeastern states
- Helping make proposals for gulf funding more competitive with data-driven predictions of conservation impact



Longleaf Implementation Team Priority Areas

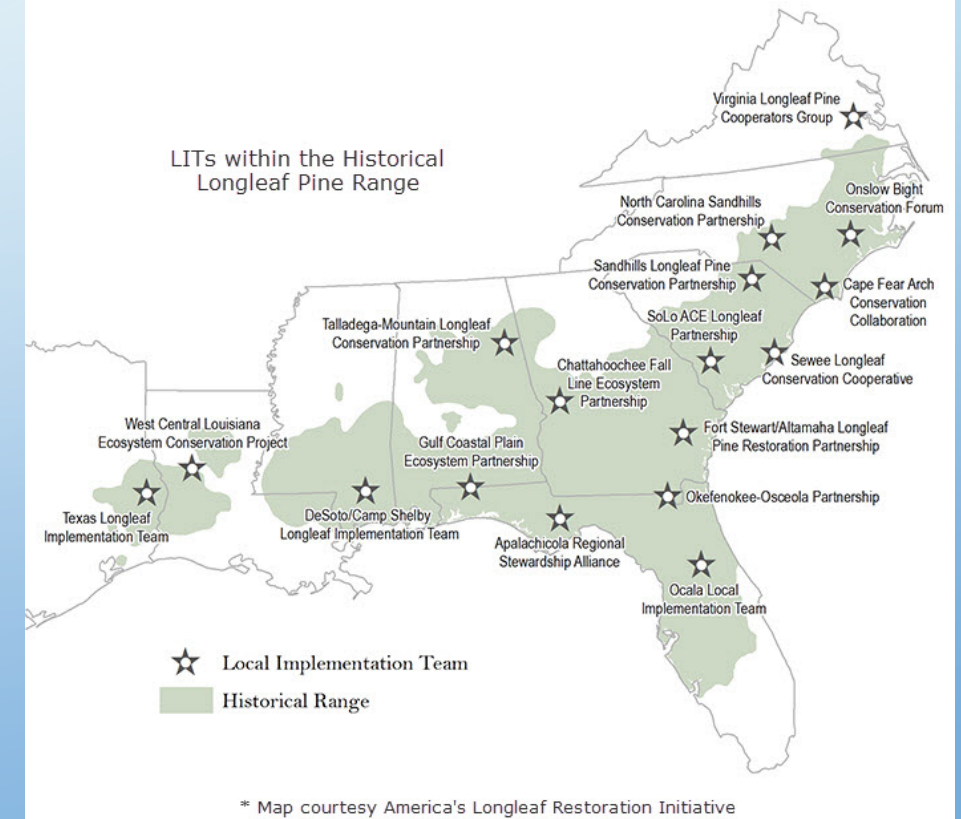


Major motivator

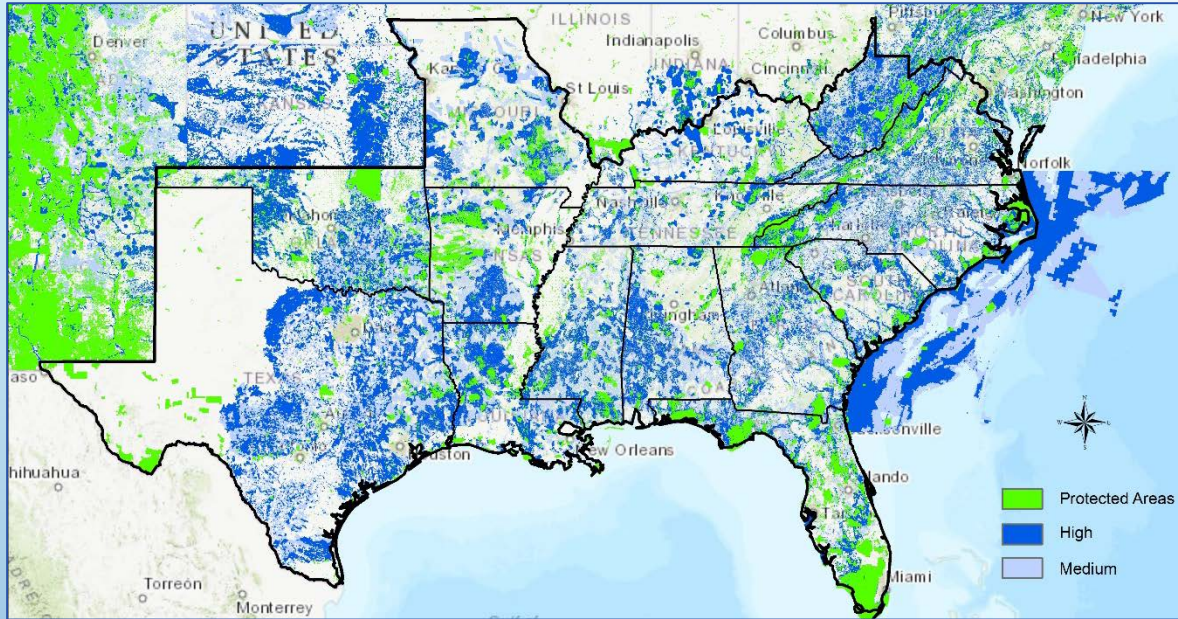
- NFWF requiring focus areas but many implementation teams haven't developed them yet

Blueprint use

- Working with the Longleaf Alliance teams to use the Blueprint when developing priority areas
- 9 Southeastern states



SEAFWA Forest Land Resources Committee Priorities



Major motivator

- Have goals for maintaining forest area as part of the Keeping Forests as Forests Initiative – but where to focus?

Blueprint use

- Helping identify important forest patches
- 15 Southeastern states

Part 3 – Other Uses in the Works

- Shared fire priorities for the Southeast
 - SERPPAS - Includes States, DOD, NRCS, and other federal agencies
- Regional species of greatest conservation need
 - SEAFWA WDC considering similar to Northeast
- Using ecosystem services to generate new funding for land management
 - Land conservation to increase municipal water supplies
 - e.g., ACF basin





SECASsoutheast.org