



SECAS Blueprint 2.0

Rua Mordecai, Science Coordinator

10-31-2017

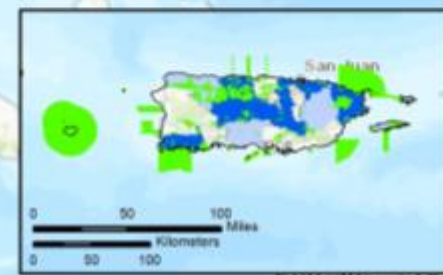
Overview

- Improvements in SECAS Blueprint 2.0
- SWAP integration
- High priority improvements for next update

Reminders about SECAS Blueprint

- Represents priority places for shared action
 - Not just about land protection
- Integrates existing subregional efforts
- Two priority classes
 1. High (30% of area)
 2. Medium (20% of area)

The map displays the contiguous United States with state boundaries and names. Major cities are marked with dots. The map is overlaid with a grid of colored regions: green for Protected Areas, blue for High risk, and purple for Medium risk. A legend in the bottom right corner explains these categories. A scale bar in miles and kilometers is located at the bottom center. An inset map of Puerto Rico is shown in the bottom right corner, with a scale bar in miles and kilometers. The map also shows the Gulf of Mexico and parts of Mexico and the Caribbean.



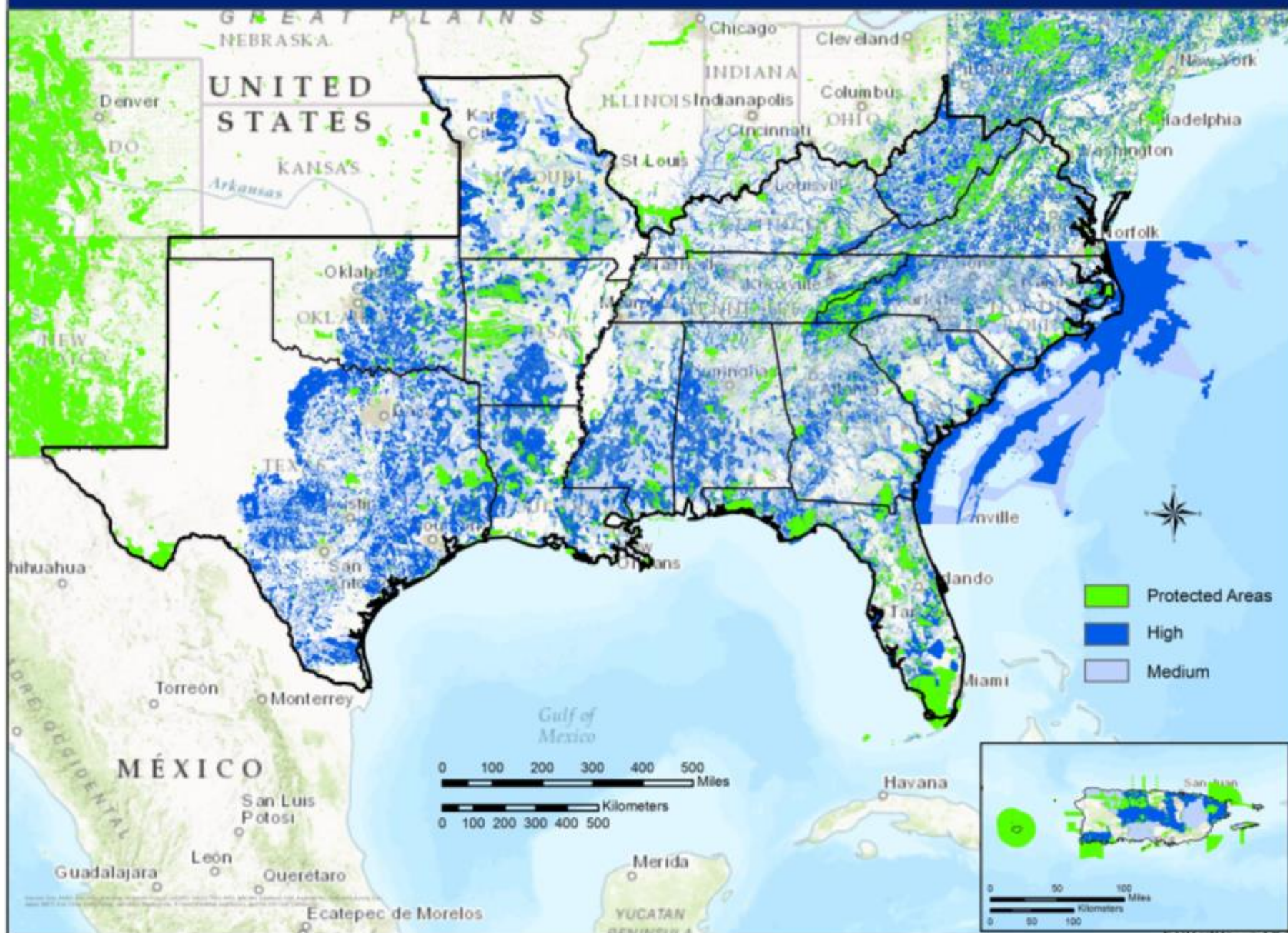
Priority improvements in this update

- Update using the most recent data available
- Improve consistency in methods and approaches
- Priorities for action in the next 10 years in the face of future change

Priority improvements in this update

- Update using the most recent data available
- Improve consistency in methods and approaches
- Priorities for action in the next 10 years in the face of future change

The Blueprint for SECAS - The Southeast Conservation Adaptation Strategy (Version 1.0 with Protected Areas)



This map illustrates the distribution of protected areas and high/medium biodiversity across the United States. The map uses a color scale: green for Protected Areas, blue for High, and purple for Medium. Major cities and state boundaries are labeled. A scale bar in miles and kilometers, a north arrow, and an inset map of Puerto Rico are also included.

Legend:

- Protected Areas (Green)
- High (Blue)
- Medium (Purple)

Scale:

- 0 100 200 300 400 500 Miles
- 0 100 200 300 400 500 Kilometers

Inset Map:

- 0 50 100 Miles
- 0 50 100 Kilometers

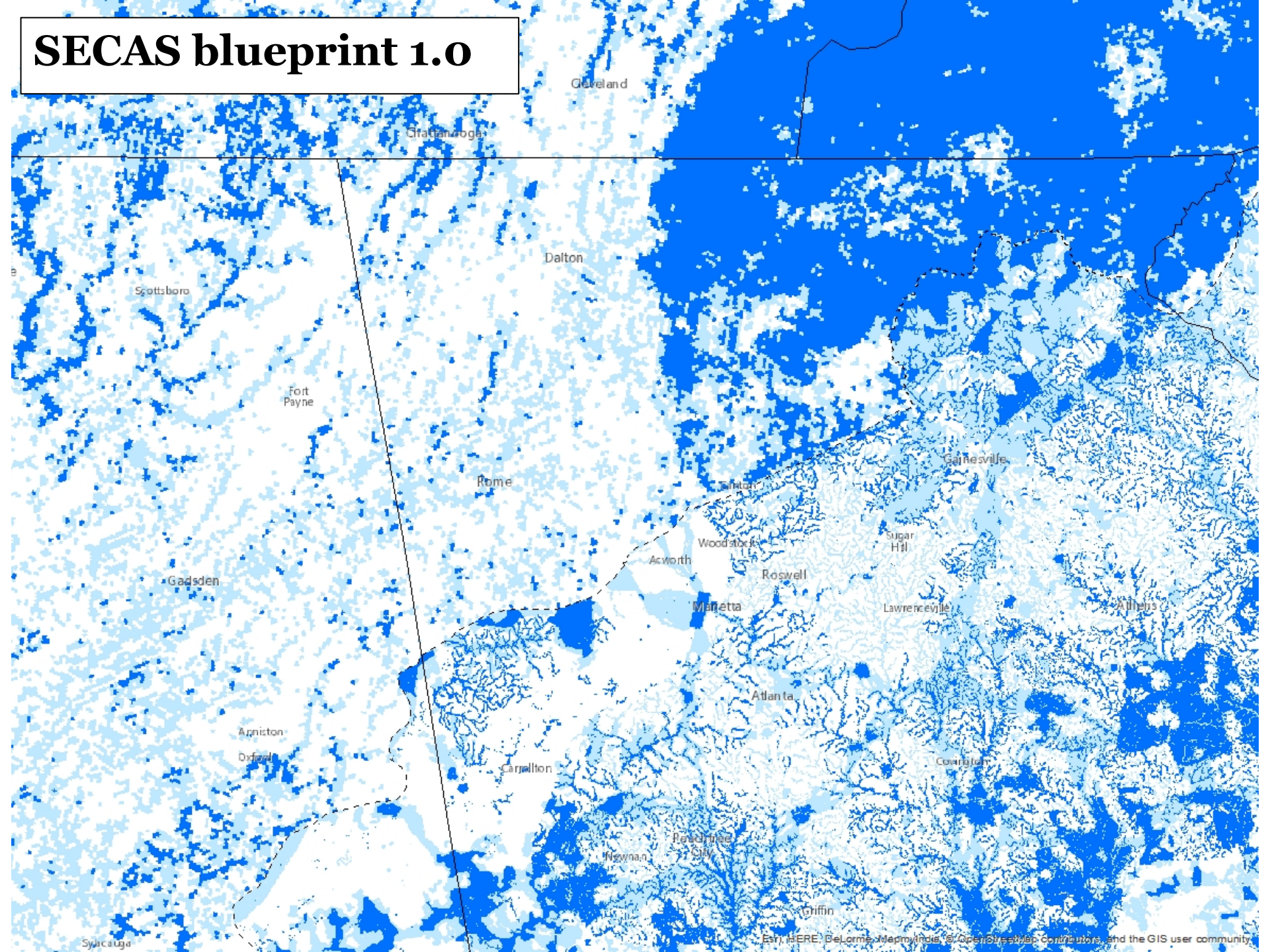
Consistency improvements in version 2.0

- Improved climate change response consistency
 - Appalachian now includes corridors and TNC resilience

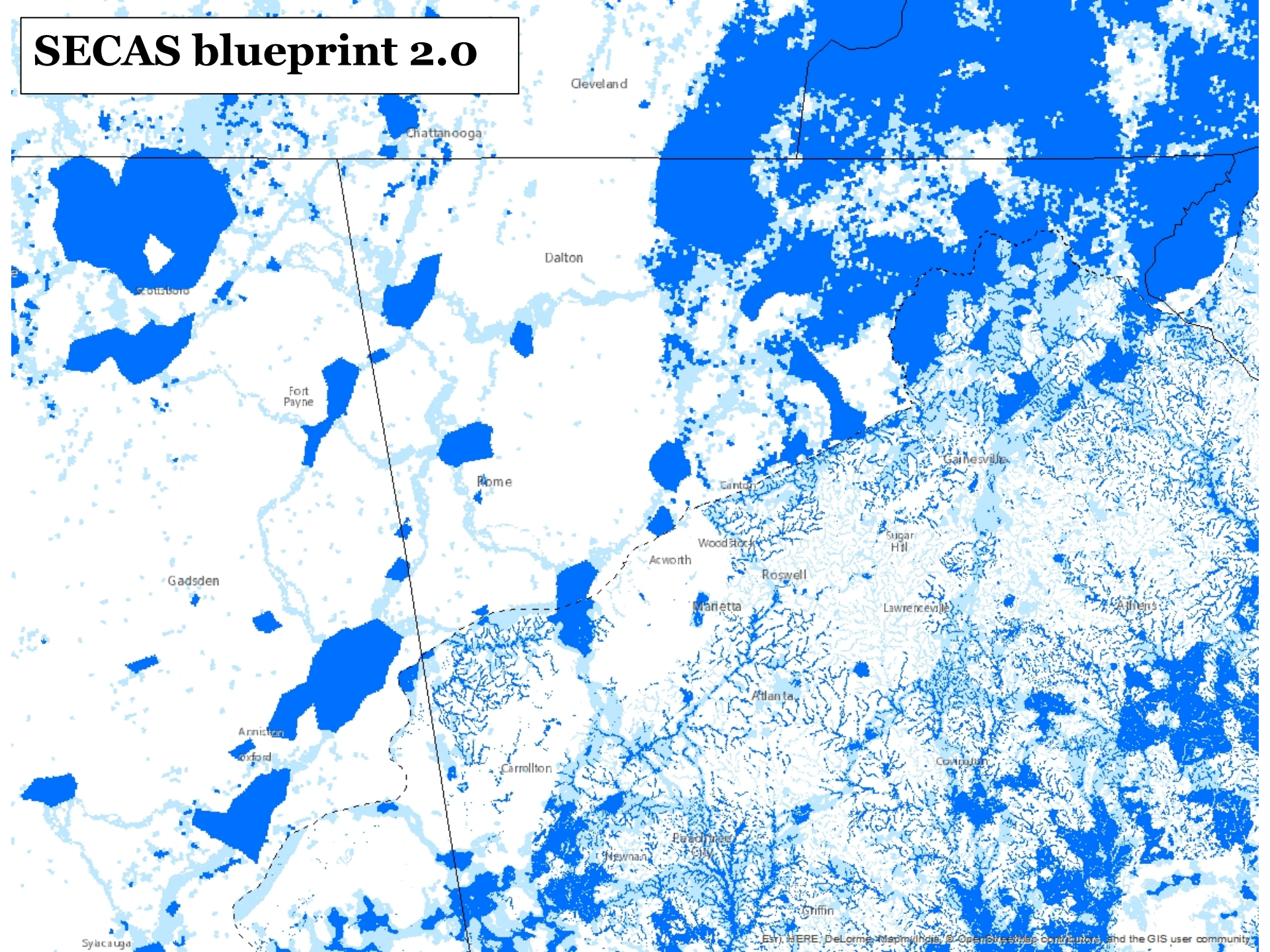
Consistency improvements in version 2.0

- Improved climate change response consistency
 - Appalachian now includes corridors and TNC resilience
- Improved consistency across LCC boundaries
 - Biggest improvements in Appalachian, North Atlantic, and South Atlantic integration

SECAS blueprint 1.0



SECAS blueprint 2.0



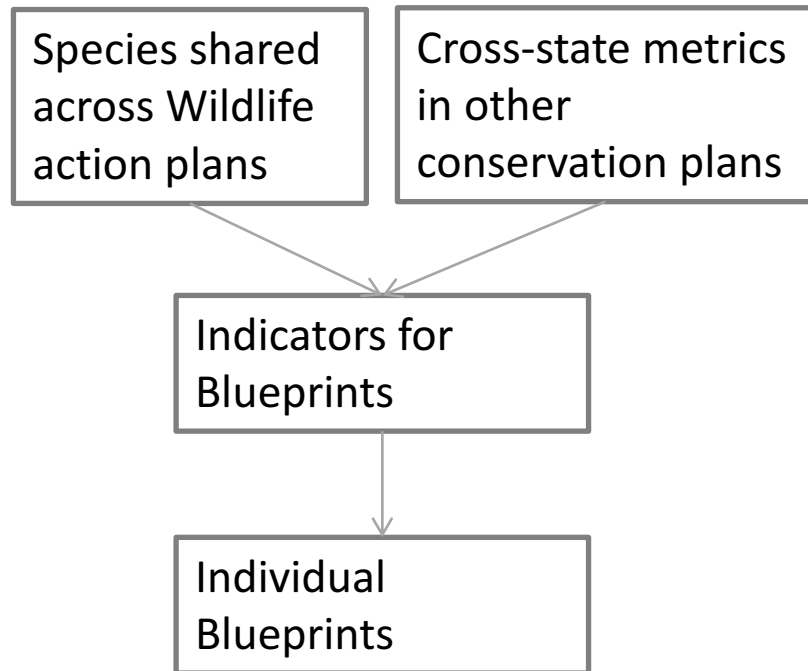
Consistency improvements in version 2.0

- Improved climate change response consistency
 - Appalachian now includes corridors and TNC resilience
- Improved consistency across LCC boundaries
 - Biggest improvements in Appalachian, North Atlantic, and South Atlantic integration
- Improved consistency beyond the South
 - New connection with CHAT connects with western states

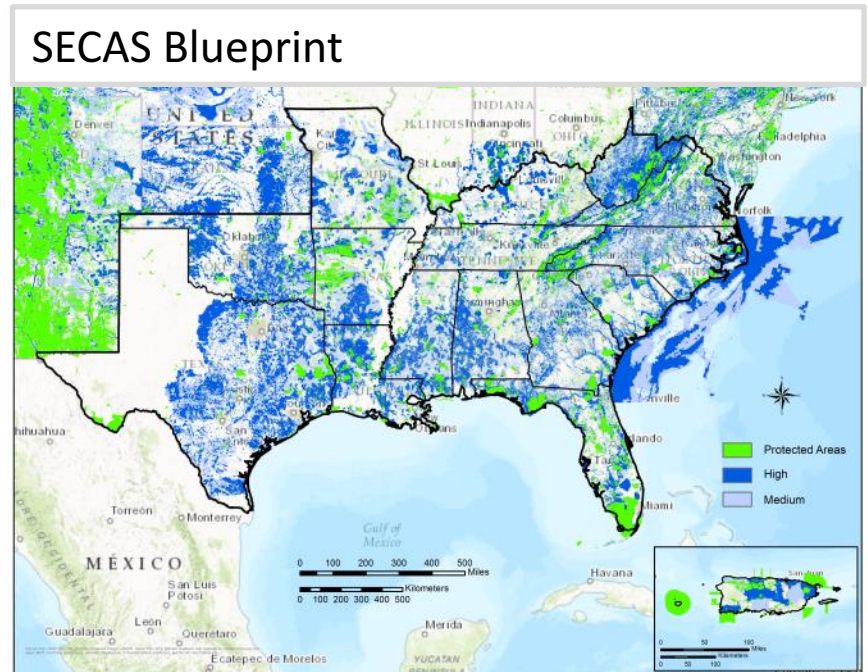
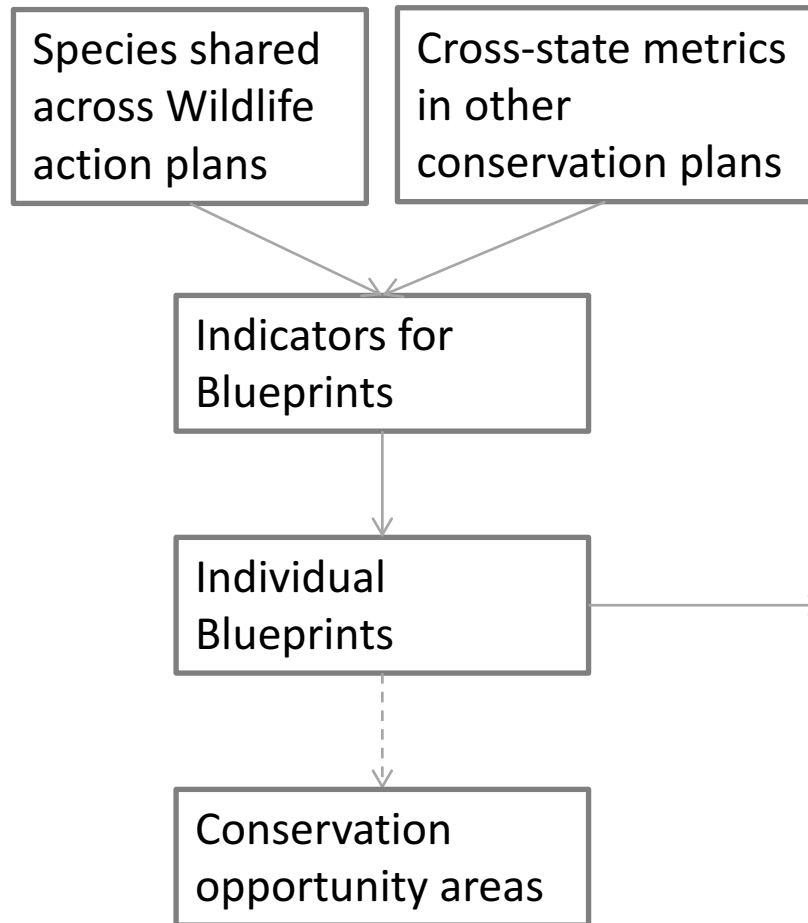
Some known issues

- Overlap zones are being slightly over-prioritized
- Some ecosystems in specific places are being under-prioritized
- Corridors are being under-prioritized in the western part of SECAS
- Full list will be available with SECAS Blueprint 2.0 release

Wildlife action plan integration



Wildlife action plan integration



Priorities so far for next update

- Update to most recent data
- Continue to improve consistency
- Create easy tools to filter the Blueprint
- Complete coverage for West Texas