

Southeast Conservation Adaptation Strategy

A Vision for 2060



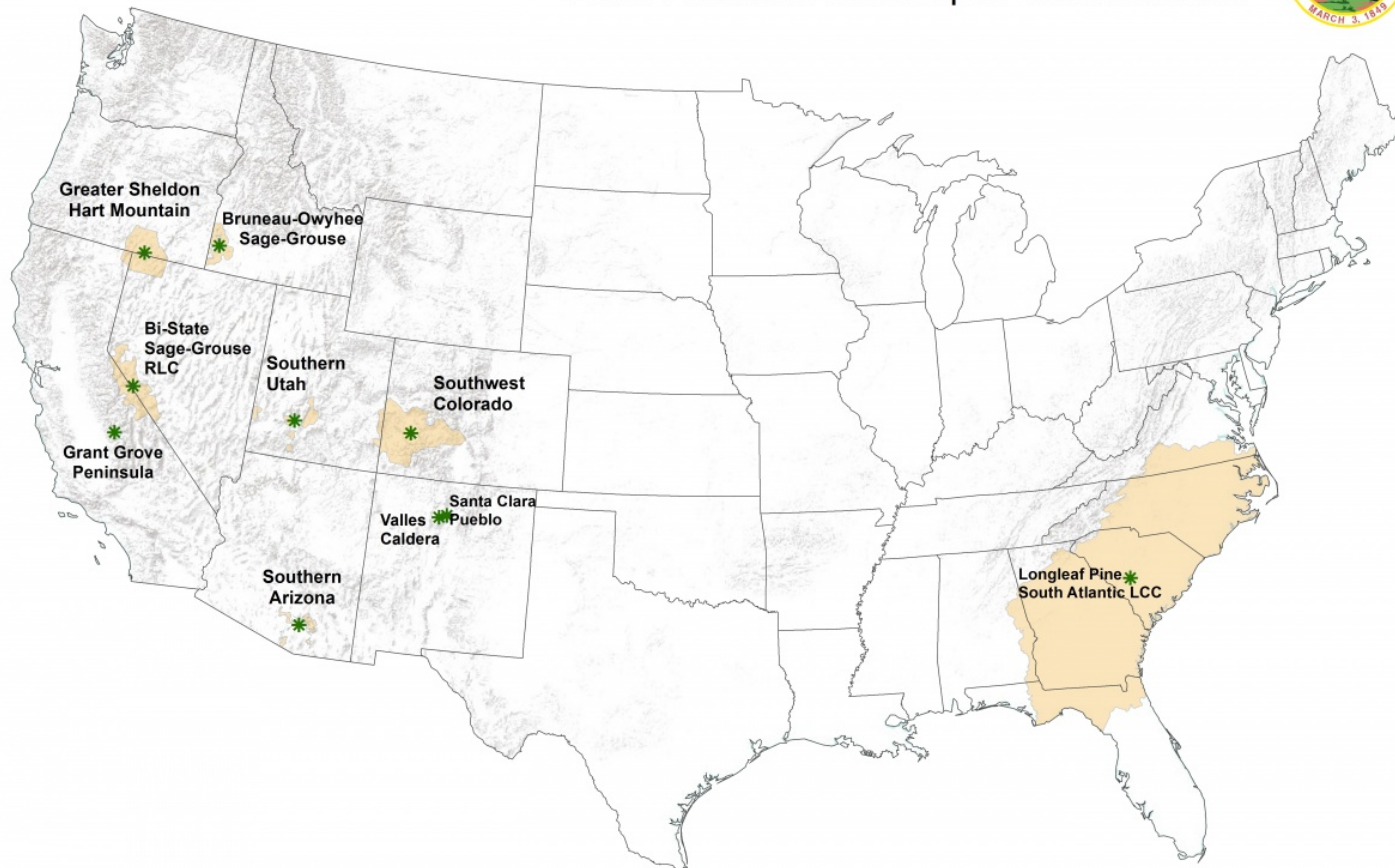
Use Cases and Application: Adding Capacity and Bringing In
New Resources - Resilient Landscapes and Fire

Mallory Martin
Coordinator, South Atlantic LCC

Photo by Jennifer Hinckley, USFWS

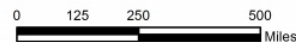
Using the Blueprint to attract new funding

Department of the Interior
2015 Resilient Landscapes Collaboratives



Legend

- * Resilient Landscapes Collaboratives
- Collaborative Area

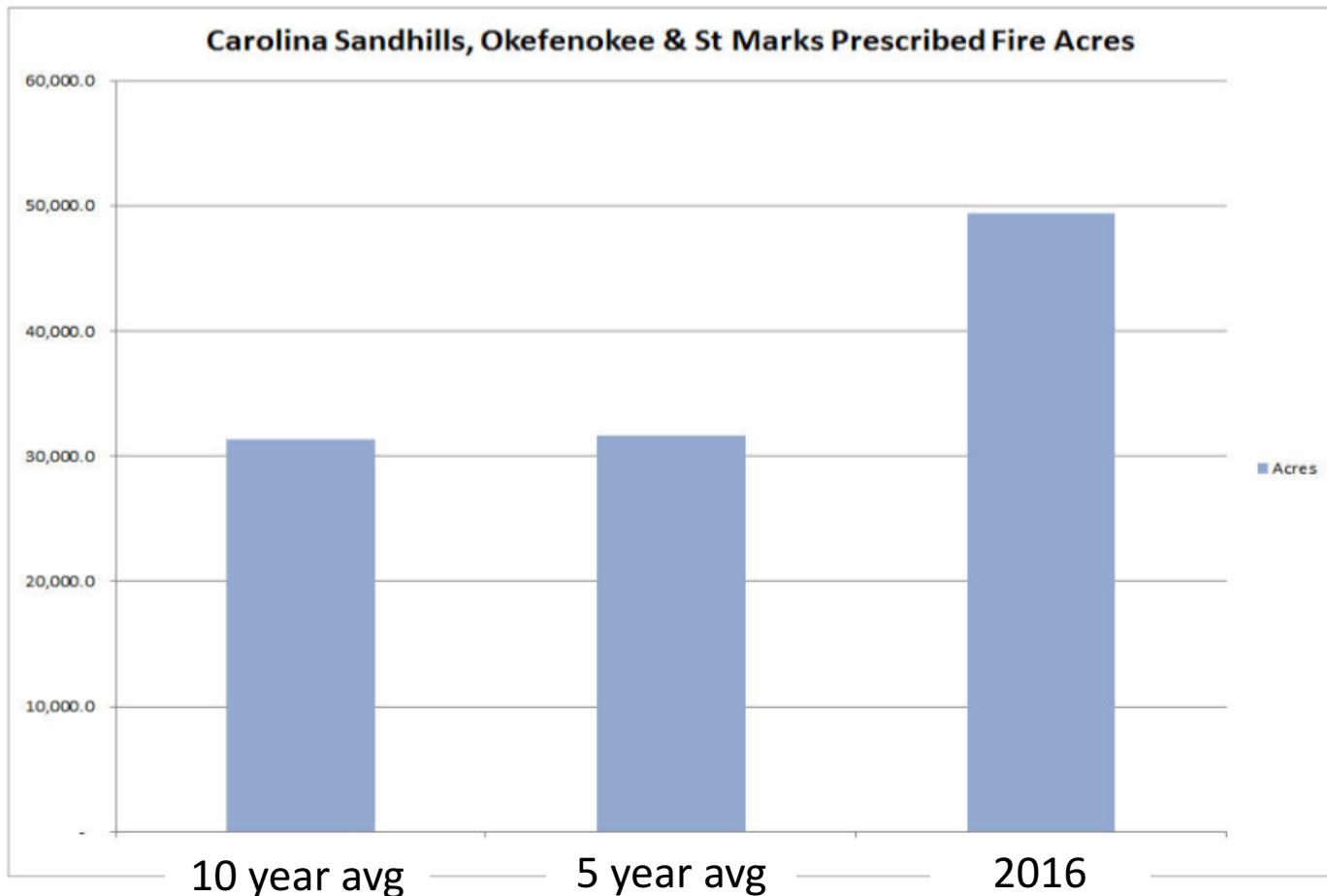


Map Produced by OWF
May 26, 2015



New on the ground funding

- ~ \$3 million dollars in the first three years to support prescribed fire on state, private, and federal lands



Reporting on impacts

Previous condition

B

Predicted after fire

A-

Predicted without fire

F



Pine & Prairie Indicators

Pine & prairie birds



Regularly burned habitat



Low road density



Indicators scores

- A** 100-80% in good condition
- B** 79-60% in good condition
- C** 59-40% in good condition
- D** 39-20% in good condition
- F** 19-0% in good condition

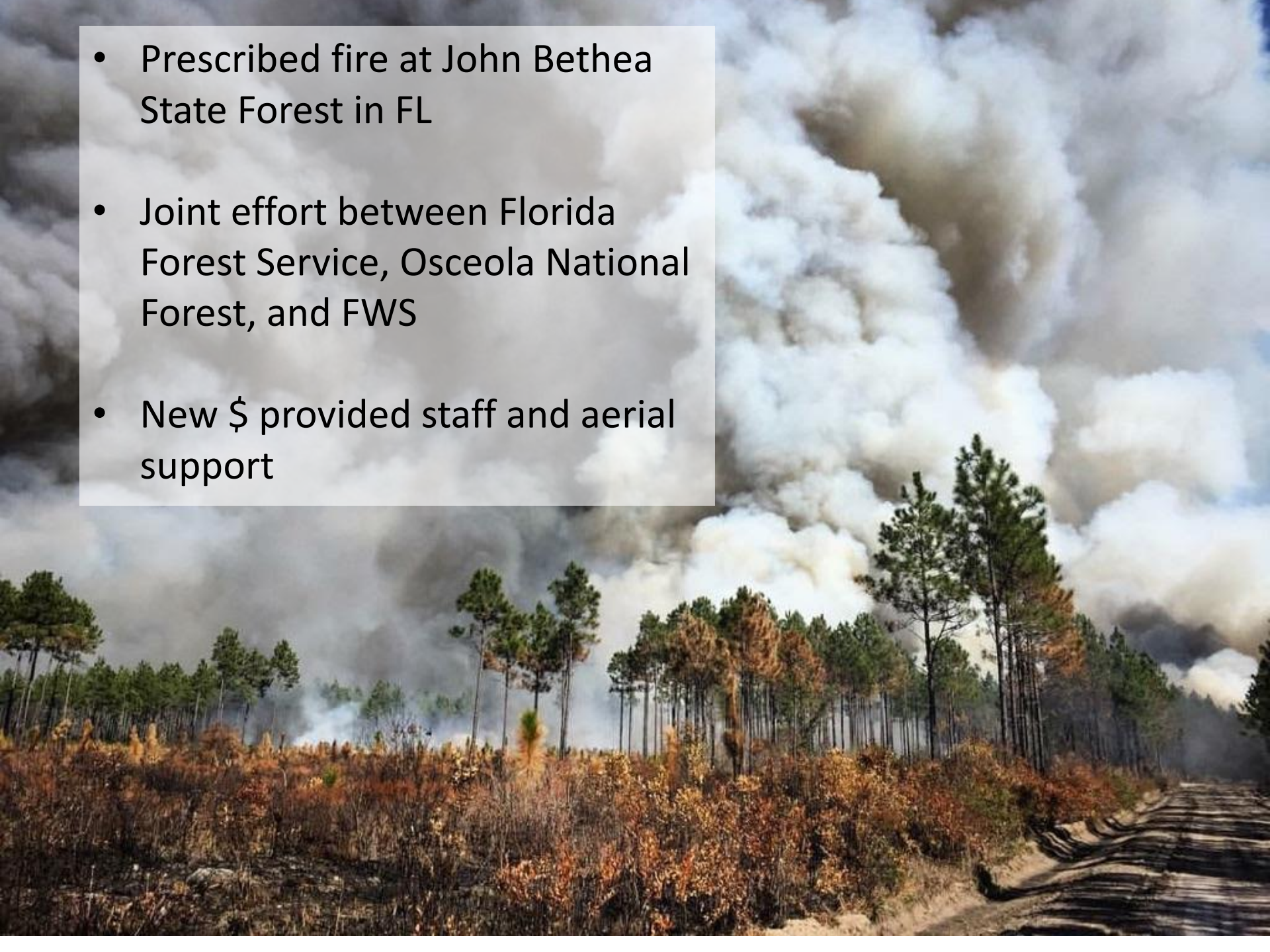
- A** 100-80% in good condition
- B** 79-60% in good condition
- C** 59-40% in good condition
- D** 39-20% in good condition
- F** 19-0% in good condition

- A** 100-80% in good condition
- B** 79-60% in good condition
- C** 59-40% in good condition
- D** 39-20% in good condition
- F** 19-0% in good condition

Overall score

- A** 100-80% in good condition
- B** 79-60% in good condition
- C** 59-40% in good condition
- D** 39-20% in good condition
- F** 19-0% in good condition

- Prescribed fire at John Bethea State Forest in FL
- Joint effort between Florida Forest Service, Osceola National Forest, and FWS
- New \$ provided staff and aerial support



Scaling up to the SECAS geography

The Blueprint for SECAS - The Southeast Conservation Adaptation Strategy (Version 2.0 with Protected Areas)

