

Southeast Conservation Blueprint Summary

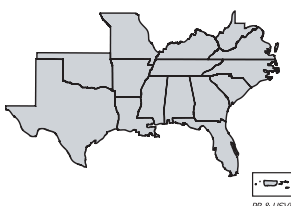
for Alabama

Created 04/18/2023

Table of Contents

1. About the Southeast Blueprint	3
2. Southeast Blueprint Priorities	4
3. Hubs and Corridors	6
4. Indicator Summary	8
5. Threats	54
6. Ownership and Partners	58
7. Credits	63

**The Southeast
Conservation
Adaptation Strategy
SECAS**



The Southeast Conservation Blueprint 2022

[THIS PAGE INTENTIONALLY LEFT BLANK]

About the Southeast Blueprint

The Southeast Conservation Blueprint is the primary product of the [Southeast Conservation Adaptation Strategy](#) (SECAS). It is a living, spatial plan to achieve the SECAS vision of a connected network of lands and waters across the Southeast and Caribbean. The Blueprint is regularly updated to incorporate new data, partner input, and information about on-the-ground conditions.

Across 15 states of the Southeast, the Blueprint identifies priority areas based on a suite of natural and cultural resource indicators representing terrestrial, freshwater, and marine ecosystems. A connectivity analysis identifies corridors that link coastal and inland areas and span climate gradients. This portion of the Southeast Blueprint is referred to as the "Base Blueprint".

To provide more complete coverage of the SECAS geography, the Blueprint incorporates two additional input plans: the Florida Marine Blueprint for marine areas in Florida and the Caribbean Landscape Conservation Design for inland areas in Puerto Rico.

For more information:

- Visit the [Blueprint webpage](#)
- Review the [Blueprint 2022 Development Process](#)
- View and download the Blueprint data and make maps on the [Blueprint page of the SECAS Atlas](#)

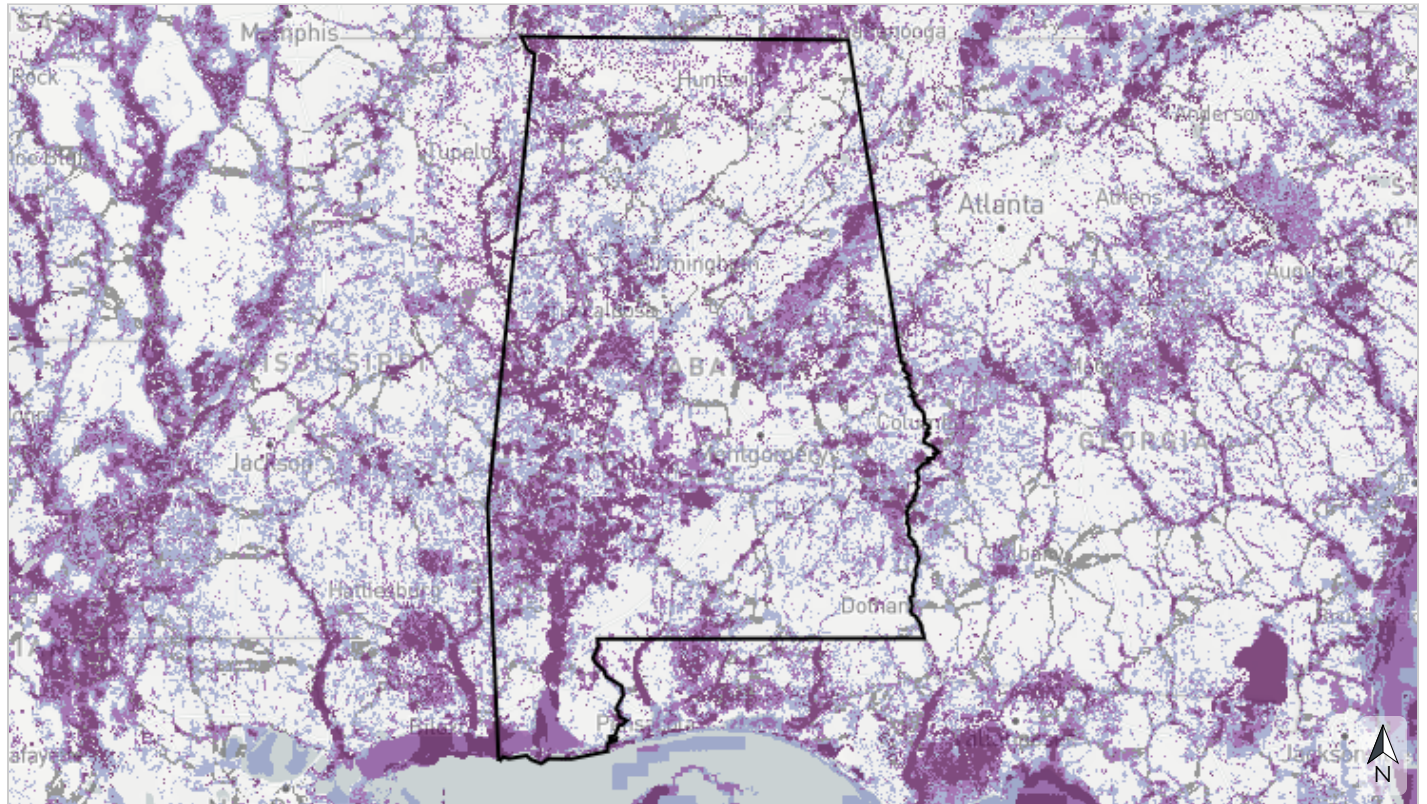
We're here to help!

- Do you have a question about the Blueprint?
- Would you like help using the Blueprint to support a proposal or inform a decision?
- Do you have a suggestion on how to improve the Blueprint? The Blueprint and its inputs are regularly revised based on input from people like you.
- Do you have feedback on how to improve the Simple Viewer interface?

If you need help or have questions, [contact Southeast Blueprint staff](#) by reaching out to a member of the user support team.

We're here to support you. We really mean it. It's what we do!

Southeast Blueprint Priorities







Basemap credits: © [Mapbox](#) © [OpenStreetMap](#) [Improve this map](#)

64 129 257 miles



Priorities for a connected network of lands and waters

-  Highest priority
-  High priority
-  Medium priority
-  Priority connections

Priority Categories

For a connected network of lands and waters

In total, Blueprint priorities and priority connections cover roughly 50% of the Southeast Blueprint geography.

Highest priority

Areas where conservation action would make the biggest impact, based on a suite of natural and cultural resource indicators. This class covers roughly 10% of the Southeast Blueprint geography.

High priority

Areas where conservation action would make a big impact, based on a suite of natural and cultural resource indicators. This class covers roughly 15% of the Southeast Blueprint geography.

Medium priority

Areas where conservation action would make an above-average impact, based on a suite of natural and cultural resource indicators. This class covers roughly 20% of the Southeast Blueprint geography.

Priority connections

Connections between priority areas that cover the shortest distance possible while routing through as much Blueprint priority as possible. This class covers roughly 5% of the Southeast Blueprint geography.

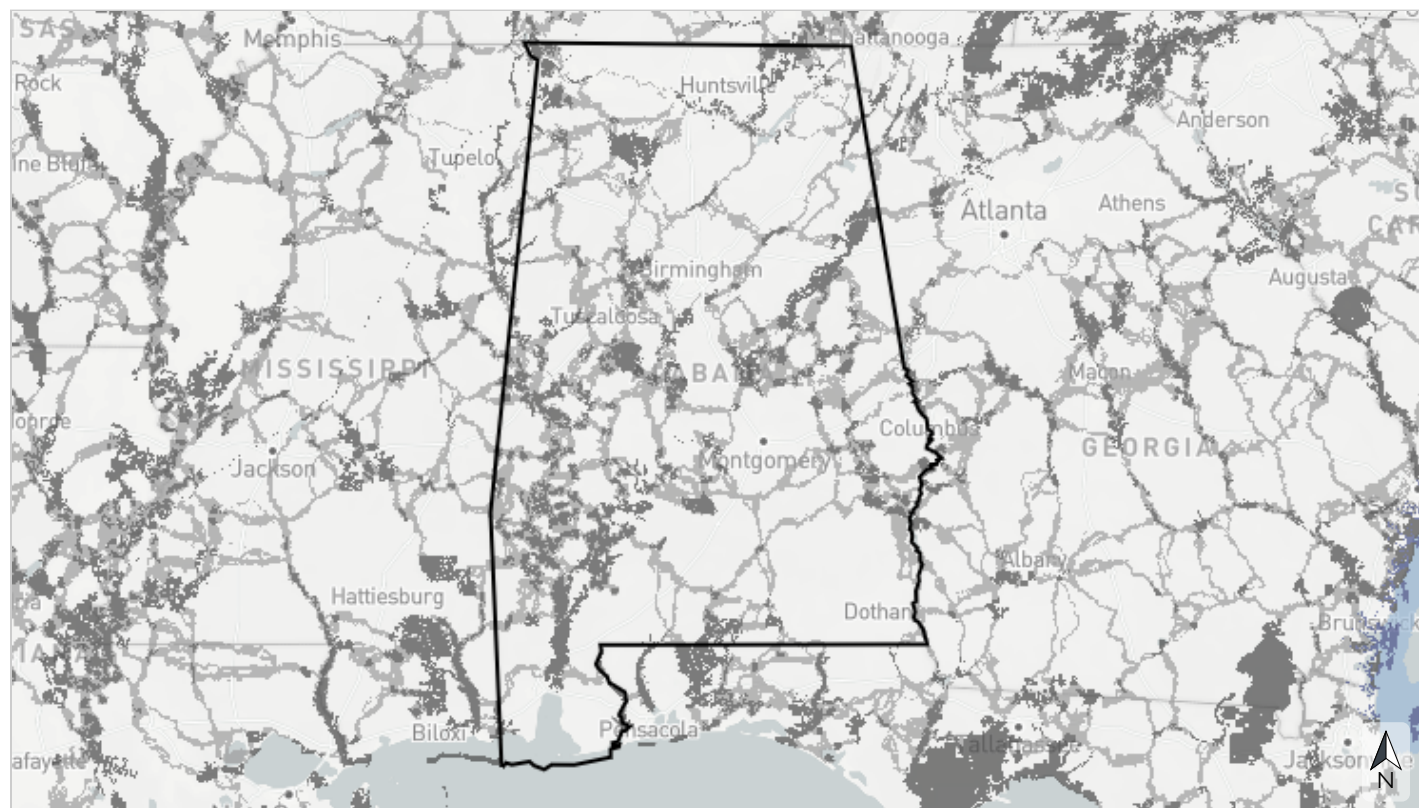
Table 1: Extent of each Blueprint priority category.

Priority Category	Acres	Percent of Area
Highest priority	4,389,959	13.1%
High priority	5,509,924	16.4%
Medium priority	6,261,061	18.7%
Priority connections	1,473,160	4.4%
Lower priority	15,907,473	47.4%
<i>Outside Southeast Blueprint</i>	7,230	<0.1%
Total area	33,548,808	100%

Hubs and Corridors

The Blueprint uses a least-cost path connectivity analysis to identify corridors that link hubs across the shortest distance possible, while also routing through as much Blueprint priority as possible.

Inland hubs are large patches (~5,000+ acres) of highest priority Blueprint areas and/or protected lands, connected by inland corridors. Marine and estuarine hubs are large estuaries and large patches (~5,000+ acres) of highest priority Blueprint areas. Marine and estuarine corridors connect those hubs within broad marine mammal movement areas.



Basemap credits: © [Mapbox](#) © [OpenStreetMap](#) [Improve this map](#)



- Inland hubs
- Inland corridors
- Marine & estuarine hubs
- Marine & estuarine corridors
- Not a hub or corridor

Table 2: Extent of hubs and corridors.

Type	Acres	Percent of Area
Inland hubs	3,582,970	10.7%
Inland corridors	6,076,836	18.1%
Not a hub or corridor	23,881,772	71.2%
<i>Outside Southeast Blueprint</i>	7,230	<0.1%
Total area	33,548,808	100%

Indicator Summary

Table 3: Terrestrial indicators.

Indicator	Present
East Coastal Plain open pine birds	✓
Equitable access to potential parks	✓
Fire frequency	✓
Great Plains perennial grasslands	-
Greenways & trails	✓
Intact habitat cores	✓
Interior Southeast grasslands	✓
Mississippi Alluvial Valley forest birds (protection)	-
Mississippi Alluvial Valley forest birds (reforestation)	-
Playas	-
Resilient terrestrial sites	✓
South Atlantic amphibian & reptile areas	✓
South Atlantic forest birds	✓
South Atlantic low-urban historic landscapes	✓
Urban park size	✓
West Coastal Plain & Ouachitas forested wetland birds	-
West Coastal Plain & Ouachitas open pine birds	-
West Gulf Coast mottled duck nesting	-

Table 4: Freshwater indicators.

Indicator	Present
Atlantic migratory fish habitat	-
Gulf migratory fish connectivity	✓
Imperiled aquatic species	✓
West Virginia imperiled aquatic species	-
Natural landcover in floodplains	✓
Network complexity	✓
Permeable surface	✓

Table 5: Coastal & marine indicators.

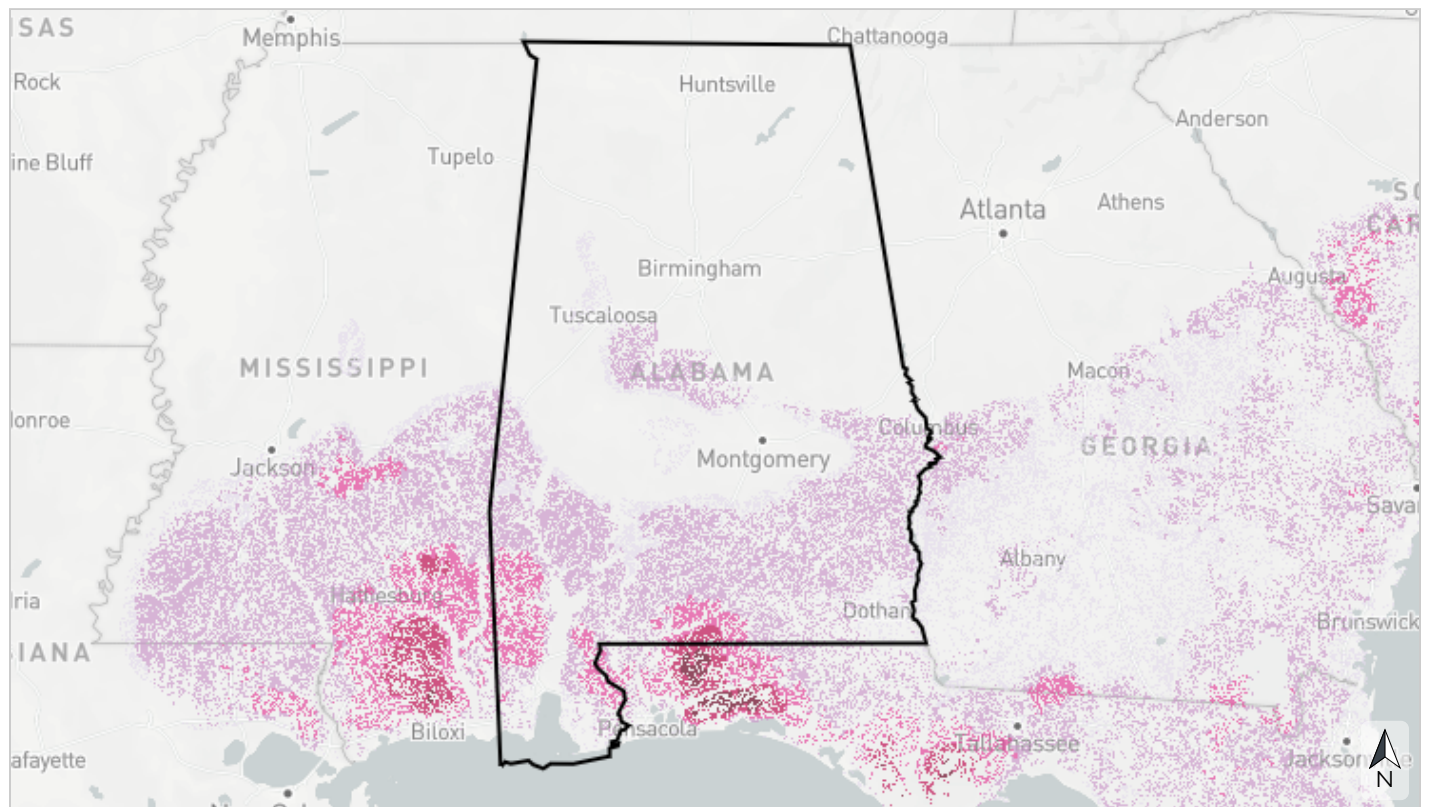
Indicator	Present
Atlantic estuarine fish habitat	-
Coastal shoreline condition	✓
Estuarine coastal condition	✓
Islands	✓
Resilient coastal sites	✓
Seagrasses	✓
South Atlantic beach birds	-
South Atlantic hardbottom & deep-sea coral	-
South Atlantic marine mammals	-
South Atlantic marine birds	-
South Atlantic maritime forest	-
Stable coastal wetlands	✓



Terrestrial

East Coastal Plain open pine birds

This indicator identifies areas within the historic longleaf pine range east of the Mississippi River where creating or maintaining open pine habitat would most benefit six focal species of birds (Bachman's sparrow, red-cockaded woodpecker, Henslow's sparrow, red-headed woodpecker, Northern bobwhite, brown-headed nuthatch). It prioritizes areas for open pine conservation based on suitability for longleaf pine, feasibility of prescribed burning, proximity to protected lands, habitat suitability for focal bird species, and proximity to source bird populations. It originates from the East Gulf Coastal Plain Joint Venture's prioritization of areas for open pine ecosystem restoration.



Basemap credits: © [Mapbox](#) © [OpenStreetMap](#) [Improve this map](#)

64 129 257 miles



- High priority for open pine conservation for focal bird species (Bachman's sparrow, red-cockaded woodpecker, Henslow's sparrow, red-headed woodpecker, Northern bobwhite, and brown-headed nuthatch) (score >80-100)
- Medium-high priority (score >60-80)
- Medium priority (score >40-60)
- Medium-low priority (score >20-40)
- Low priority for open pine conservation for focal bird species (score 0-20)

Table 6: Indicator values for East Coastal Plain open pine birds in this area. A good condition threshold is not yet defined for this indicator.

	Indicator Values	Acres	Percent of Area
↑ High	High priority for open pine conservation for focal bird species (Bachman's sparrow, red-cockaded woodpecker, Henslow's sparrow, red-headed woodpecker, Northern bobwhite, and brown-headed nuthatch) (score >80-100)	0	0%
	Medium-high priority (score >60-80)	65,965	0.2%
	Medium priority (score >40-60)	724,158	2.2%
	Medium-low priority (score >20-40)	4,349,954	13.0%
↓ Low	Low priority for open pine conservation for focal bird species (score 0-20)	975,532	2.9%
	<i>Area not evaluated for this indicator</i>	27,425,969	81.7%
	<i>Outside Southeast Blueprint</i>	7,230	<0.1%
	Total area	33,548,808	100%

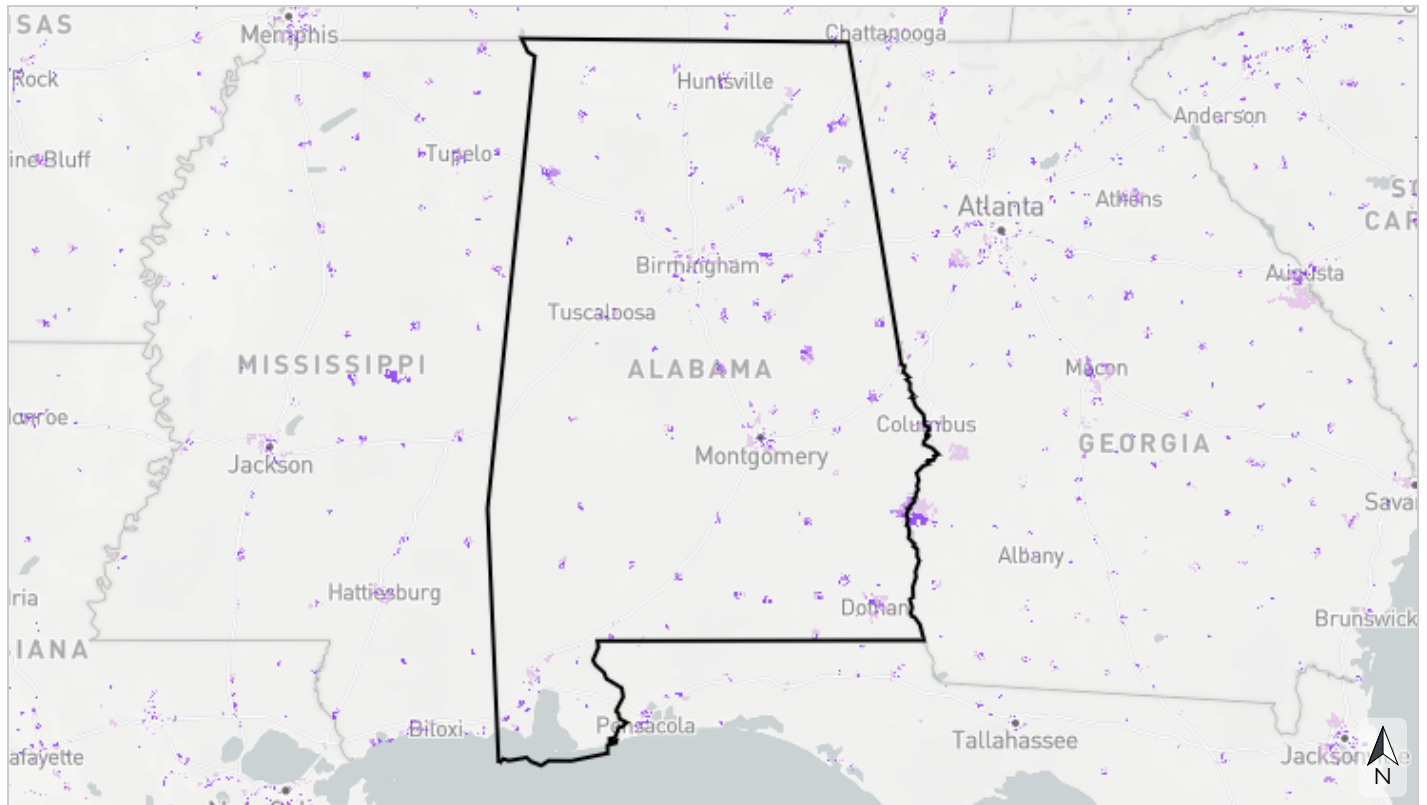
To learn more and explore the GIS data, [view this indicator in the SECAS Atlas](#).



Terrestrial

Equitable access to potential parks

This cultural resource indicator prioritizes places to create new parks that would fill gaps in equitable access to open space within socially vulnerable communities. It identifies areas where residents currently lack access to parks within a 10-minute walk (accounting for walkable road networks and access barriers like highways and fences), then prioritizes based on park need using demographic and environmental metrics. Parks help improve public health, foster a conservation ethic by providing opportunities for people to connect with nature, and support critical ecosystem services. This indicator originates from the Trust for Public Land's ParkServe park priority areas.



Basemap credits: © [Mapbox](#) © [OpenStreetMap](#) [Improve this map](#)

64 129 257 miles



- Very high priority for a new park that would create nearby equitable access
- High priority for a new park that would create nearby equitable access
- Moderate priority for a new park that would create nearby equitable access

Table 7: Indicator values for equitable access to potential parks in this area. A good condition threshold is not yet defined for this indicator.

	Indicator Values	Acres	Percent of Area
↑ High	Very high priority for a new park that would create nearby equitable access	157,385	0.5%
	High priority for a new park that would create nearby equitable access	228,762	0.7%
↓ Low	Moderate priority for a new park that would create nearby equitable access	270,836	0.8%
	<i>Area not evaluated for this indicator</i>	32,884,594	98.0%
	<i>Outside Southeast Blueprint</i>	7,230	<0.1%
	Total area	33,548,808	100%

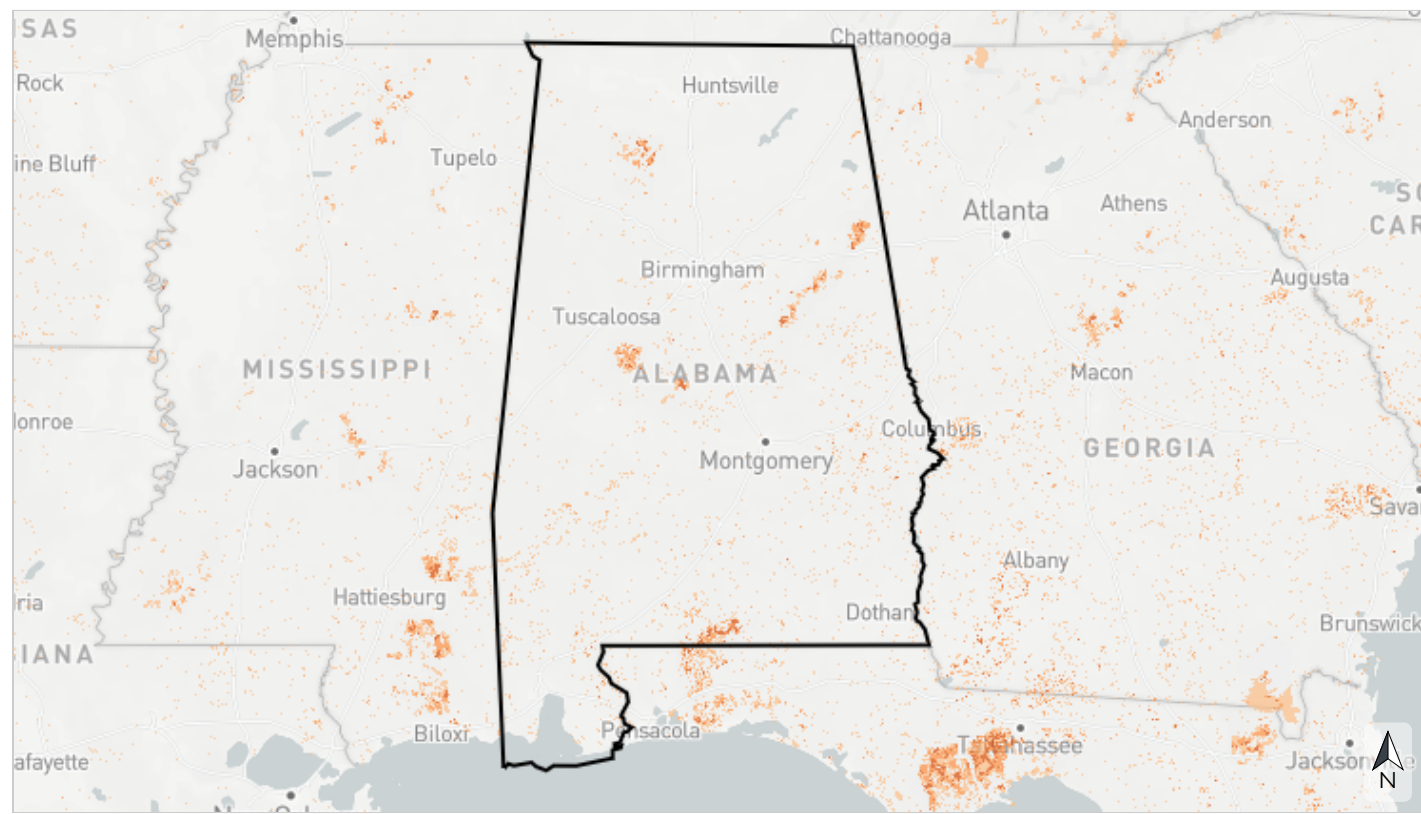
To learn more and explore the GIS data, [view this indicator in the SECAS Atlas](#).



Terrestrial

Fire frequency

This indicator uses remote sensing to estimate the number of times an area has been burned from 2013 to 2021. Many Southeastern ecosystems rely on regular, low-intensity fires to maintain habitat, encourage native plant growth, and reduce wildfire risk. This indicator combines burned area layers from both U.S. Geological Survey Landsat data and the inter-agency Monitoring Trends in Burn Severity program. Landsat-based fire predictions within the range of longleaf pine are also available through Southeast FireMap.



Basemap credits: © [Mapbox](#) © [OpenStreetMap](#) [Improve this map](#)

64 129 257 miles



- Burned 3+ times from 2013-2021
- Burned 2 times from 2013-2021
- Burned 1 time from 2013-2021
- Not burned from 2013-2021 or row crop

Table 8: Indicator values for fire frequency in this area. Good condition thresholds reflect the range of indicator values that occur in healthy, functioning ecosystems.

	Indicator Values	Acres	Percent of Area	
↑ High	Burned 3+ times from 2013-2021	65,452	0.2%	↑ In good condition
	Burned 2 times from 2013-2021	158,761	0.5%	
	Burned 1 time from 2013-2021	849,770	2.5%	
↓ Low	Not burned from 2013-2021 or row crop	32,467,595	96.8%	↓ Not in good condition
	<i>Outside Southeast Blueprint</i>	7,230	<0.1%	
	Total area	33,548,808	100%	

To learn more and explore the GIS data, [view this indicator in the SECAS Atlas](#).



Terrestrial

Greenways & trails

This cultural resource indicator measures both the natural condition and connected length of greenways and trails to characterize the quality of the recreational experience. Natural condition is based on the amount of impervious surface surrounding the path. Connected length captures how far a person can go without leaving a dedicated path, based on common distances for walking, running, and biking. This indicator originates from OpenStreetMap.



Basemap credits: © Mapbox © OpenStreetMap [Improve this map](#)



- Mostly natural and connected for ≥ 40 km
- Mostly natural and connected for 5 to < 40 km or partly natural and connected for ≥ 40 km
- Mostly natural and connected for 1.9 to < 5 km, partly natural and connected for 5 to < 40 km, or developed and ≥ 40 km
- Mostly natural and connected for < 1.9 km, partly natural and connected for 1.9 to < 5 km, or developed and connected for 5 to < 40 km
- Partly natural and connected for < 1.9 km or developed and connected for 1.9 to < 5 km
- Developed and connected for < 1.9 km
- Sidewalk or other path

Table 9: Indicator values for greenways & trails in this area. Good condition thresholds reflect the range of indicator values that occur in healthy, functioning ecosystems.

	Indicator Values	Acres	Percent of Area	
↑ High	Mostly natural and connected for ≥ 40 km	4,179	<0.1%	
	Mostly natural and connected for 5 to <40 km or partly natural and connected for ≥ 40 km	4,013	<0.1%	
	Mostly natural and connected for 1.9 to <5 km, partly natural and connected for 5 to <40 km, or developed and ≥ 40 km	1,546	<0.1%	
	Mostly natural and connected for <1.9 km, partly natural and connected for 1.9 to <5 km, or developed and connected for 5 to <40 km	550	<0.1%	↑ In good condition
↓ Low	Partly natural and connected for <1.9 km or developed and connected for 1.9 to <5 km	709	<0.1%	↓ Not in good condition
	Developed and connected for <1.9 km	371	<0.1%	
	Sidewalk or other path	33,294	<0.1%	
	Area not evaluated for this indicator	33,496,916	99.8%	
	Outside Southeast Blueprint	7,230	<0.1%	
	Total area	33,548,808	100%	

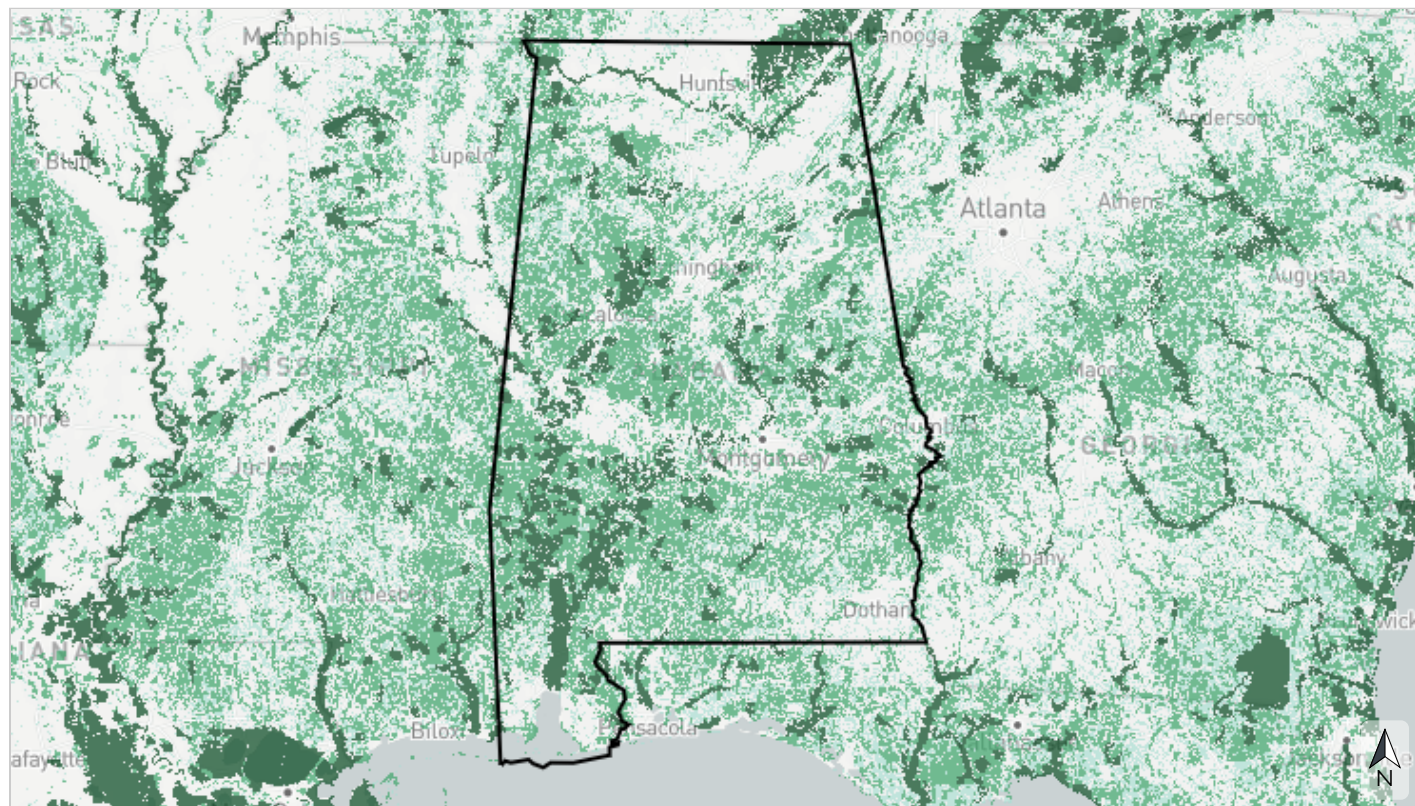
To learn more and explore the GIS data, [view this indicator in the SECAS Atlas](#).



Terrestrial

Intact habitat cores

This indicator represents the size of large, unfragmented patches of natural habitat. It identifies minimally disturbed natural areas at least 100 acres in size and greater than 200 meters wide. Large areas of intact natural habitat are important for many wildlife species, including reptiles and amphibians, birds, and large mammals. This indicator originates from Esri's green infrastructure data.



Basemap credits: © Mapbox © OpenStreetMap [Improve this map](#)

64 129 257 miles



- Large core (>10,000 acres)
- Medium core (>1,000-10,000 acres)
- Small core (>100-1,000 acres)
- Not a core

Table 10: Indicator values for intact habitat cores in this area. Good condition thresholds reflect the range of indicator values that occur in healthy, functioning ecosystems.

	Indicator Values	Acres	Percent of Area	
↑ High	Large core (>10,000 acres)	4,297,310	12.8%	
	Medium core (>1,000-10,000 acres)	11,369,593	33.9%	
	Small core (>100-1,000 acres)	3,948,812	11.8%	↑ In good condition
↓ Low	Not a core	13,925,863	41.5%	↓ Not in good condition
	<i>Outside Southeast Blueprint</i>	7,230	<0.1%	
	Total area	33,548,808	100%	

To learn more and explore the GIS data, [view this indicator in the SECAS Atlas](#).



Terrestrial

Interior Southeast grasslands

This indicator represents grasslands in the interior southeastern United States, which support important plants, birds, and pollinators. It includes grasslands with and without trees that are historically maintained by geology (e.g., outcrops, glades, and barrens), fire (e.g., Piedmont prairies), and/or the regular violent flooding on the banks of high-energy rivers known as “riverscours” (e.g., riverscours prairies). Known grasslands receive the highest scores, followed by bumble bee habitat buffers around known sites, areas in potentially compatible management, and restoration opportunities within grassland geology. This indicator combines data from multiple sources, including the Southeastern Grasslands Initiative, the Central Hardwoods Joint Venture, the Rangeland Analysis Platform, and The Nature Conservancy.



Basemap credits: © [Mapbox](#) © [OpenStreetMap](#) [Improve this map](#)

0 64 129 257 miles



- Known grassland
- Known grassland buffer
- Potentially compatible management within grassland geology (undeveloped powerline right-of-way or perennial forbs and grasses)
- Potentially compatible management outside of grassland geology (undeveloped powerline right-of-way or perennial forbs and grasses)
- Grassland geology
- Grassland less likely

Table 11: Indicator values for Interior Southeast grasslands in this area. A good condition threshold is not yet defined for this indicator.

	Indicator Values	Acres	Percent of Area
↑ High	Known grassland	18,587	<0.1%
	Known grassland buffer	1,007,710	3.0%
	Potentially compatible management within grassland geology (undeveloped powerline right-of-way or perennial forbs and grasses)	695,193	2.1%
	Potentially compatible management outside of grassland geology (undeveloped powerline right-of-way or perennial forbs and grasses)	2,840,670	8.5%
	Grassland geology	3,029,441	9.0%
↓ Low	Grassland less likely	24,529,601	73.1%
	<i>Area not evaluated for this indicator</i>	<i>1,420,376</i>	<i>4.2%</i>
	<i>Outside Southeast Blueprint</i>	<i>7,230</i>	<i><0.1%</i>
	Total area	33,548,808	100%

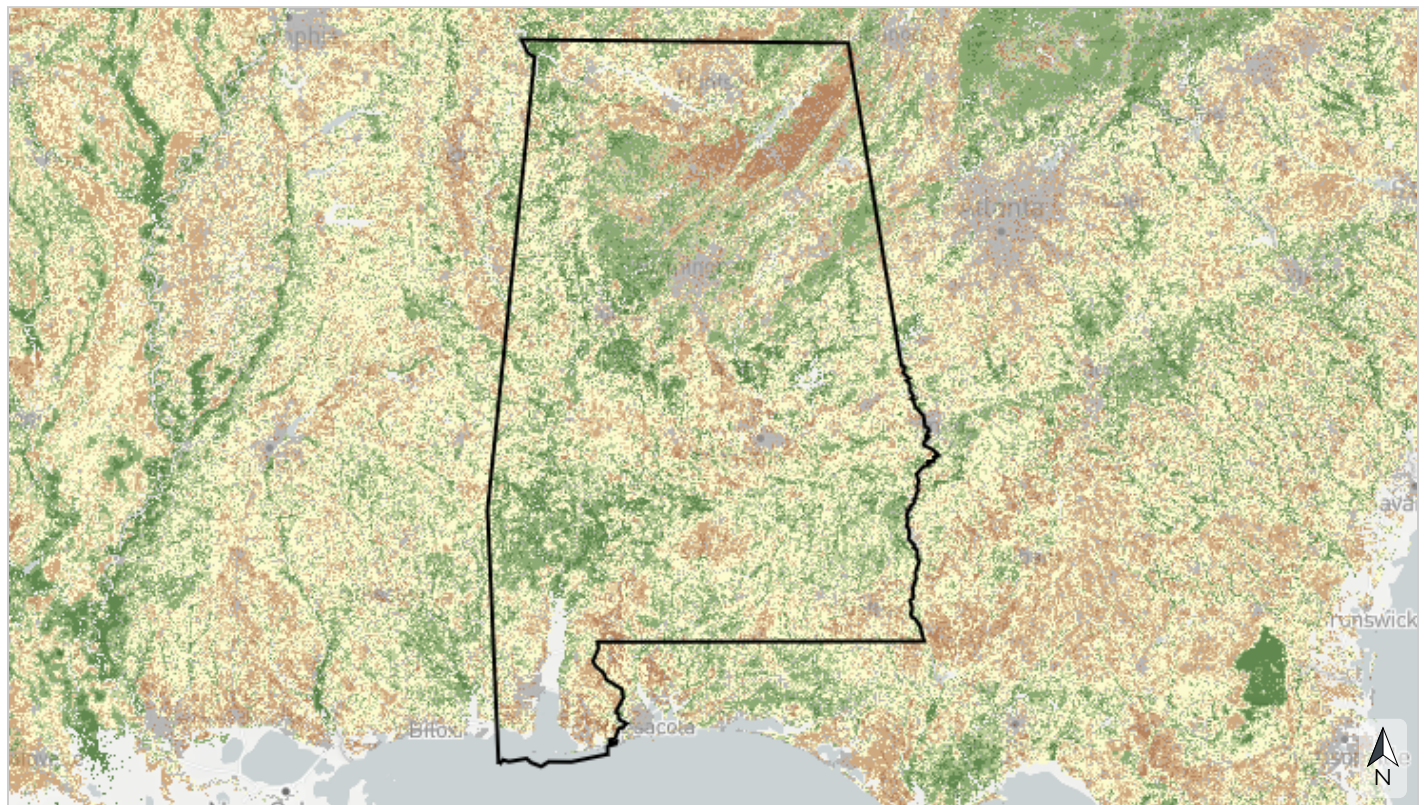
To learn more and explore the GIS data, [view this indicator in the SECAS Atlas](#).



Terrestrial

Resilient terrestrial sites

This indicator depicts an area's capacity to maintain species diversity and ecosystem function in the face of climate change. It measures two factors that influence resilience. The first, landscape diversity, reflects the number of microhabitats and climatic gradients created by topography, elevation, and hydrology. The second, local connectedness, reflects the degree of habitat fragmentation and strength of barriers to species movement. Highly resilient sites contain many different habitat niches that support biodiversity, and allow species to move freely through the landscape to find suitable microclimates as the climate changes. This indicator originates from The Nature Conservancy's Resilient Land data.



Basemap credits: © [Mapbox](#) © [OpenStreetMap](#) [Improve this map](#)



Table 12: Indicator values for resilient terrestrial sites in this area. A good condition threshold is not yet defined for this indicator.

	Indicator Values	Acres	Percent of Area
↑ High	Most resilient	1,207,807	3.6%
	More resilient	5,770,385	17.2%
	Slightly more resilient	5,715,236	17.0%
	Average/median resilience	9,248,683	27.6%
	Slightly less resilient	3,346,496	10.0%
	Less resilient	2,927,203	8.7%
	Least resilient	990,105	3.0%
↓ Low	Developed	3,010,693	9.0%
	<i>Area not evaluated for this indicator</i>	1,324,969	3.9%
	<i>Outside Southeast Blueprint</i>	7,230	<0.1%
	Total area	33,548,808	100%

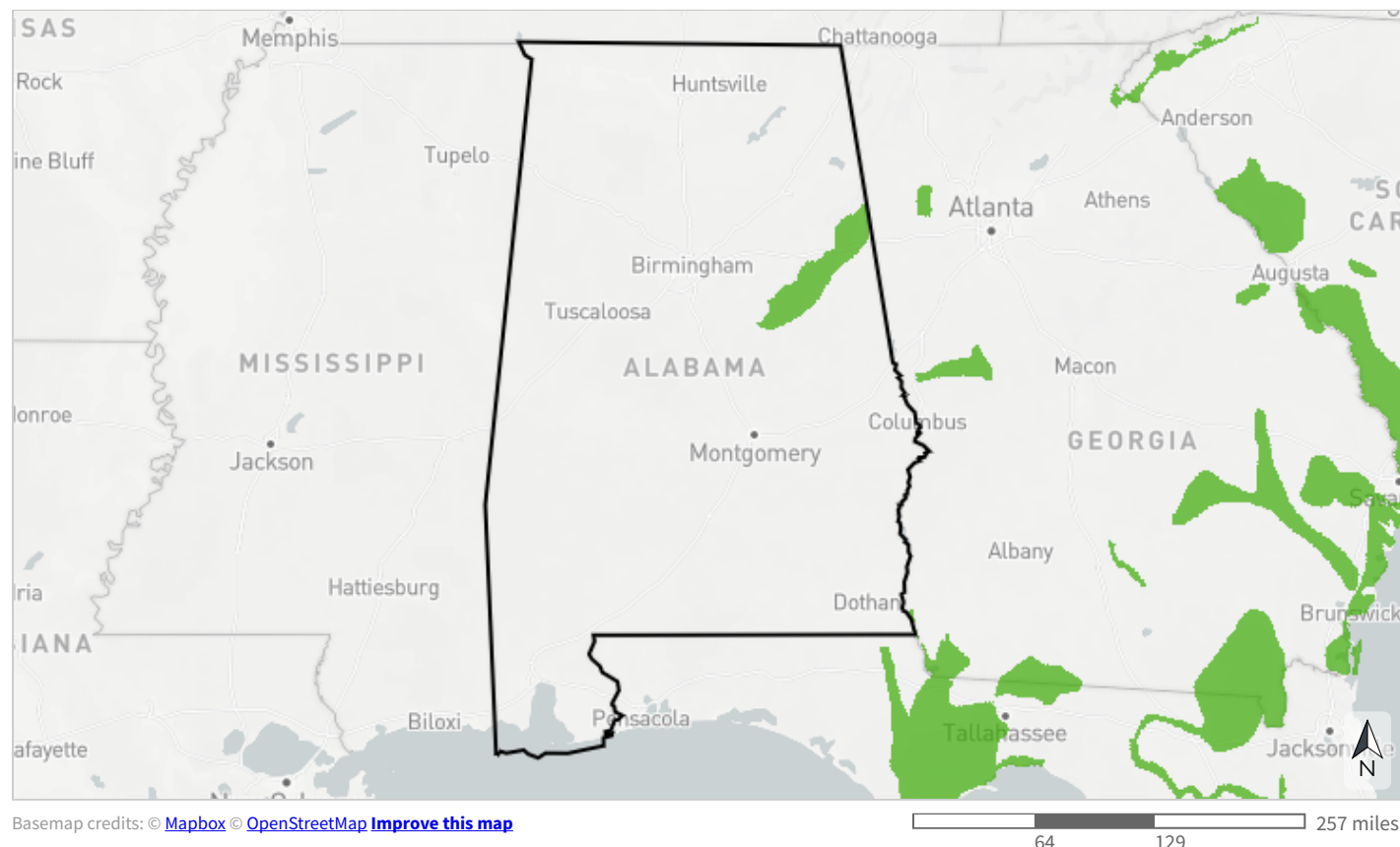
To learn more and explore the GIS data, [view this indicator in the SECAS Atlas](#).



Terrestrial

South Atlantic amphibian & reptile areas

This indicator represents Priority Amphibian and Reptile Conservation Areas (PARCAs) in the South Atlantic. PARCA is an expert-driven, nonregulatory designation that includes places capable of supporting viable amphibian and reptile populations, places occupied by rare or imperiled species, and places rich in biodiversity or species unique to that geographic area (i.e., endemism).



- Priority Amphibian and Reptile Conservation Area (PARCA)
- Not a Priority Amphibian and Reptile Conservation Area (PARCA)

Table 13: Indicator values for South Atlantic amphibian & reptile areas in this area. A good condition threshold is not yet defined for this indicator.

	Indicator Values	Acres	Percent of Area
↑ High	Priority Amphibian and Reptile Conservation Area (PARCA)	567,049	1.7%
↓ Low	Not a Priority Amphibian and Reptile Conservation Area (PARCA)	3,938,016	11.7%
	<i>Area not evaluated for this indicator</i>	29,036,512	86.6%
	<i>Outside Southeast Blueprint</i>	7,230	<0.1%
	Total area	33,548,808	100%

Priority Amphibian and Reptile Conservation Areas:

Lake Seminole Region

Longleaf pine communities and embedded isolated wetlands provide habitat for gopher tortoises and eastern diamondback rattlesnakes. The Lower Chattahoochee and Flint Rivers, as well as Spring Creek, are inhabited by good populations of Barbour's map and alligator snapping turtles. Apalachicola dusky and Chamberlain's dwarf salamanders are found in seepages in this region. This area is underlain by the Floridan aquifer, which is home to the Georgia blind salamander.

Talladega

Largely forested and, although fragmented, still has nice deciduous forest habitats.

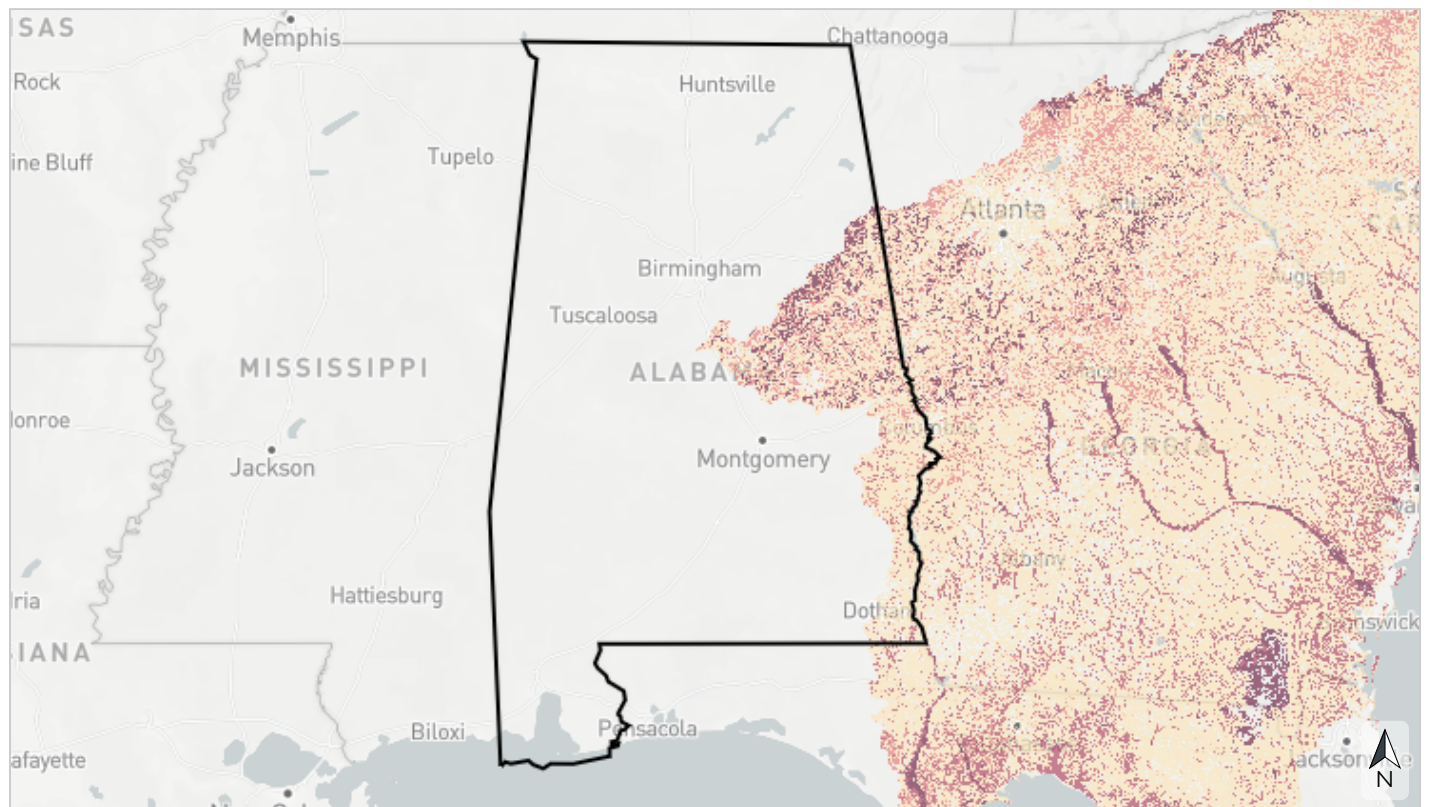
To learn more and explore the GIS data, [view this indicator in the SECAS Atlas](#).



Terrestrial

South Atlantic forest birds

This indicator is an index of habitat suitability for twelve upland hardwood and forested wetland bird species (wood thrush, whip-poor-will, American woodcock, red-headed woodpecker, Chuck-will's widow, hooded warbler, Kentucky warbler, Acadian flycatcher, Northern parula, black-throated green warbler, prothonotary warbler, Swainson's warbler) based on patch size and other ecosystem characteristics such as proximity to water and proximity to forest and ecotone edge. The needs of these species are increasingly restrictive at higher index values, reflecting better quality habitat. This indicator originates from Southeast Gap Analysis Program and Designing Sustainable Landscapes bird habitat models.



Basemap credits: © [Mapbox](#) © [OpenStreetMap](#) [Improve this map](#)




- Very large patches near water (potential for presence of Swainson's warbler)
- Large patches often near water (potential for presence of Northern parula, black-throated green warbler, or Prothonotary warbler)
- Medium patches (potential for presence of Acadian flycatcher)
- Small patches often near water (potential presence of hooded warbler or Kentucky warbler)
- Very small patches or near open areas (potential for presence of wood thrush, whip-poor-will, red-headed woodpecker, Chuck-will's widow, or American woodcock)
- Less potential for presence of forest bird index species

Table 14: Indicator values for South Atlantic forest birds in this area. Good condition thresholds reflect the range of indicator values that occur in healthy, functioning ecosystems.

	Indicator Values	Acres	Percent of Area	
↑ High	Very large patches near water (potential for presence of Swainson's warbler)	484,157	1.4%	
	Large patches often near water (potential for presence of Northern parula, black-throated green warbler, or Prothonotary warbler)	106,813	0.3%	
	Medium patches (potential for presence of Acadian flycatcher)	694,320	2.1%	
	Small patches often near water (potential presence of hooded warbler or Kentucky warbler)	216,961	0.6%	↑ In good condition
↓ Low	Very small patches or near open areas (potential for presence of wood thrush, whip-poor-will, red-headed woodpecker, Chuck-will's widow, or American woodcock)	2,490,341	7.4%	↓ Not in good condition
	Less potential for presence of forest bird index species	512,473	1.5%	
	Area not evaluated for this indicator	29,036,512	86.6%	
	Outside Southeast Blueprint	7,230	<0.1%	
	Total area	33,548,808	100%	

To learn more and explore the GIS data, [view this indicator in the SECAS Atlas](#).

 Terrestrial

South Atlantic low-urban historic landscapes

This cultural resource indicator is an index of sites on the National Register of Historic Places surrounded by limited urban development. It identifies significant historic places that remain connected to their context in the natural world. This indicator originates from the National Park Service and various state historic resource agencies.



Basemap credits: © [Mapbox](#) © [OpenStreetMap](#) [Improve this map](#)






-  Historic place with nearby low-urban buffer
-  Historic place with nearby high-urban buffer
-  Not in the National Register of Historic Places

Table 15: Indicator values for South Atlantic low-urban historic landscapes in this area. Good condition thresholds reflect the range of indicator values that occur in healthy, functioning ecosystems.

	Indicator Values	Acres	Percent of Area	
↑ High	Historic place with nearby low-urban buffer	148	<0.1%	↑ In good condition
	Historic place with nearby high-urban buffer	276	<0.1%	↓ Not in good condition
↓ Low	Not in the National Register of Historic Places	4,504,642	13.4%	
	<i>Area not evaluated for this indicator</i>	29,036,512	86.6%	
	<i>Outside Southeast Blueprint</i>	7,230	<0.1%	
	Total area	33,548,808	100%	

To learn more and explore the GIS data, [view this indicator in the SECAS Atlas](#).



Terrestrial

Urban park size

This cultural resource indicator measures the size of parks larger than 5 acres in the urban environment. Protected natural areas in urban environments provide urban residents a nearby place to connect with nature, and offer refugia for some species. This indicator complements the equitable access to potential parks indicator by capturing the value of existing parks. It originates from the U.S. Geological Survey's Protected Areas Database and 2019 National Land Cover Database percent developed impervious layer.



Basemap credits: © [Mapbox](#) © [OpenStreetMap](#) [Improve this map](#)

64 129 257 miles



- >75 acre urban park
- >50-75 acre urban park
- >30-50 acre urban park
- >10-30 acre urban park
- 5-10 acre urban park

Table 16: Indicator values for urban park size in this area. A good condition threshold is not yet defined for this indicator.

	Indicator Values	Acres	Percent of Area
↑ High	>75 acre urban park	86,721	0.3%
	>50-75 acre urban park	3,638	<0.1%
	>30-50 acre urban park	3,201	<0.1%
	>10-30 acre urban park	5,061	<0.1%
↓ Low	5-10 acre urban park	1,629	<0.1%
	Area not evaluated for this indicator	33,441,327	99.7%
	Outside Southeast Blueprint	7,230	<0.1%
	Total area	33,548,808	100%

To learn more and explore the GIS data, [view this indicator in the SECAS Atlas](#).



Freshwater

Gulf migratory fish connectivity

This indicator captures how far upstream migratory fish in the Gulf of Mexico have been observed. How far upstream migratory fish can travel reflects not just the presence of dams and other barriers, but also the presence of measures like fish ladders that allow specific species to access habitat upstream of dams. This indicator originates from The Nature Conservancy's Southeast Aquatic Connectivity Assessment Project and applies to the Environmental Protection Agency's estimated floodplain, which spatially defines areas estimated to be inundated by a 100-year flood, also known as the 1% annual chance flood.



- Presence of Gulf sturgeon
- Presence of Alabama shad, American shad, or striped bass

Table 17: Indicator values for Gulf migratory fish connectivity in this area. Good condition thresholds reflect the range of indicator values that occur in healthy, functioning ecosystems.

	Indicator Values	Acres	Percent of Area	
↑ High	Presence of Gulf sturgeon	93,047	0.3%	
↓ Low	Presence of Alabama shad, American shad, or striped bass	202	<0.1%	↑ In good condition
	<i>Area not evaluated for this indicator</i>	33,448,329	99.7%	
	<i>Outside Southeast Blueprint</i>	7,230	<0.1%	
	Total area	33,548,808	100%	

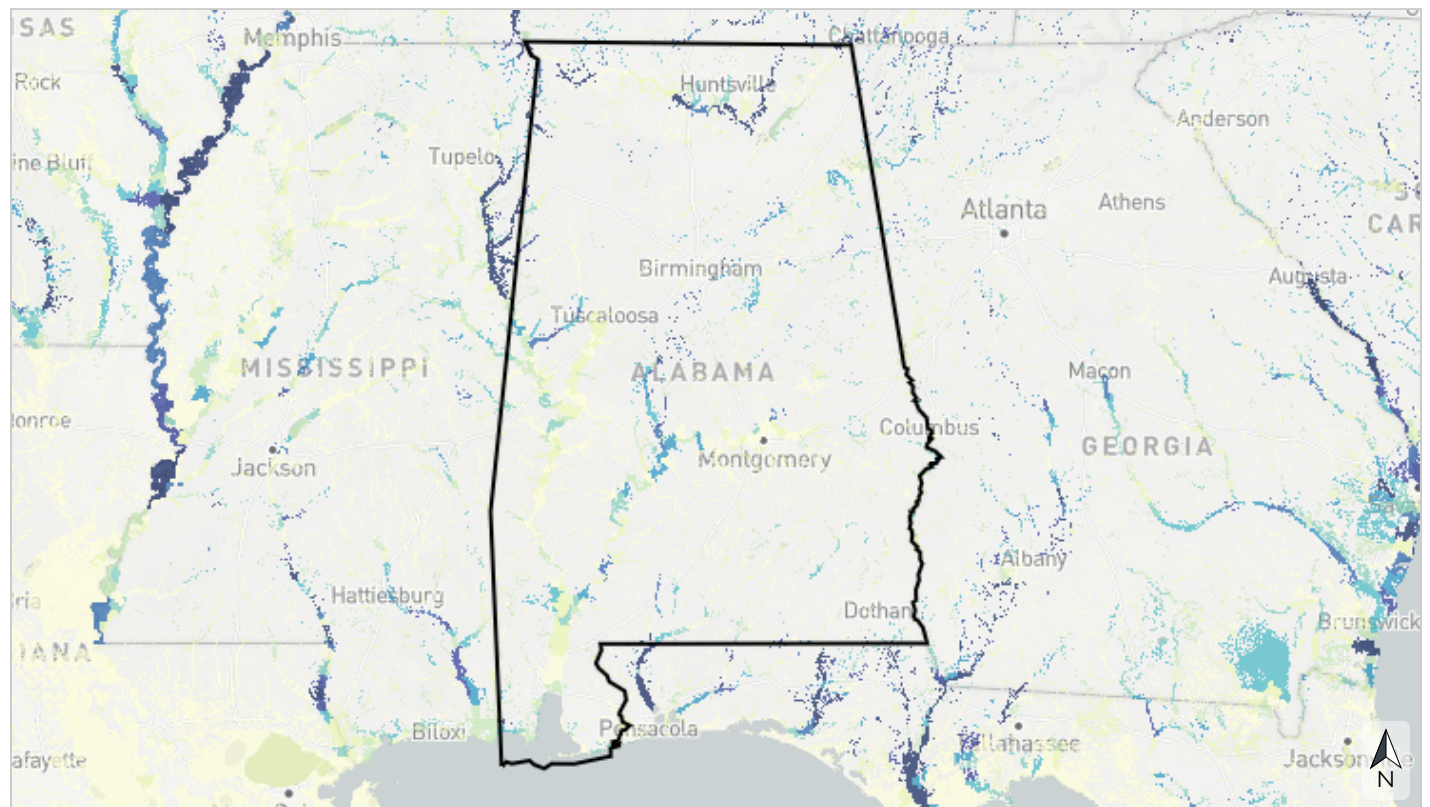
To learn more and explore the GIS data, [view this indicator in the SECAS Atlas](#).



Freshwater

Imperiled aquatic species

This indicator measures the number of aquatic animal Species of Greatest Conservation Need (SGCN) observed within each 12-digit HUC subwatershed, including fish, mussels, snails, crayfish, and amphibians. SGCN are identified in State Wildlife Action Plans as most in need of conservation action. This indicator captures patterns of rare and endemic species diversity not well-represented by other freshwater aquatic indicators. It originates from state Natural Heritage Program data collected by the Southeast Aquatic Resources Partnership and applies to the Environmental Protection Agency's estimated floodplain, which spatially defines areas estimated to be inundated by a 100-year flood, also known as the 1% annual chance flood.



Basemap credits: © [Mapbox](#) © [OpenStreetMap](#) [Improve this map](#)

64 129 257 miles

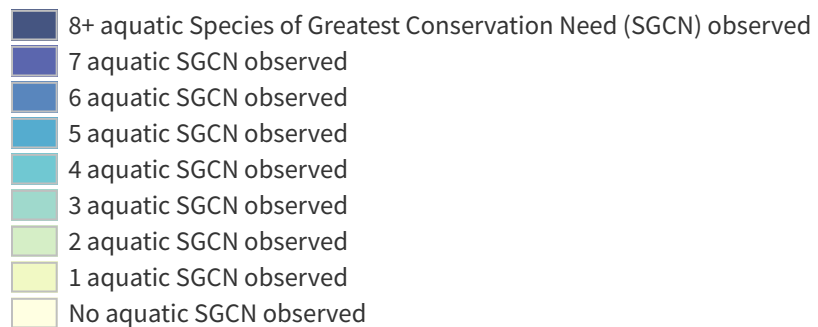


Table 18: Indicator values for imperiled aquatic species in this area. A good condition threshold is not yet defined for this indicator.

	Indicator Values	Acres	Percent of Area
↑ High	8+ aquatic Species of Greatest Conservation Need (SGCN) observed	135,284	0.4%
	7 aquatic SGCN observed	41,764	0.1%
	6 aquatic SGCN observed	123,552	0.4%
	5 aquatic SGCN observed	161,435	0.5%
	4 aquatic SGCN observed	183,346	0.5%
	3 aquatic SGCN observed	291,302	0.9%
	2 aquatic SGCN observed	634,968	1.9%
	1 aquatic SGCN observed	1,160,081	3.5%
↓ Low	No aquatic SGCN observed	2,363,340	7.0%
	<i>Area not evaluated for this indicator</i>	28,446,506	84.8%
	<i>Outside Southeast Blueprint</i>	7,230	<0.1%
	Total area	33,548,808	100%

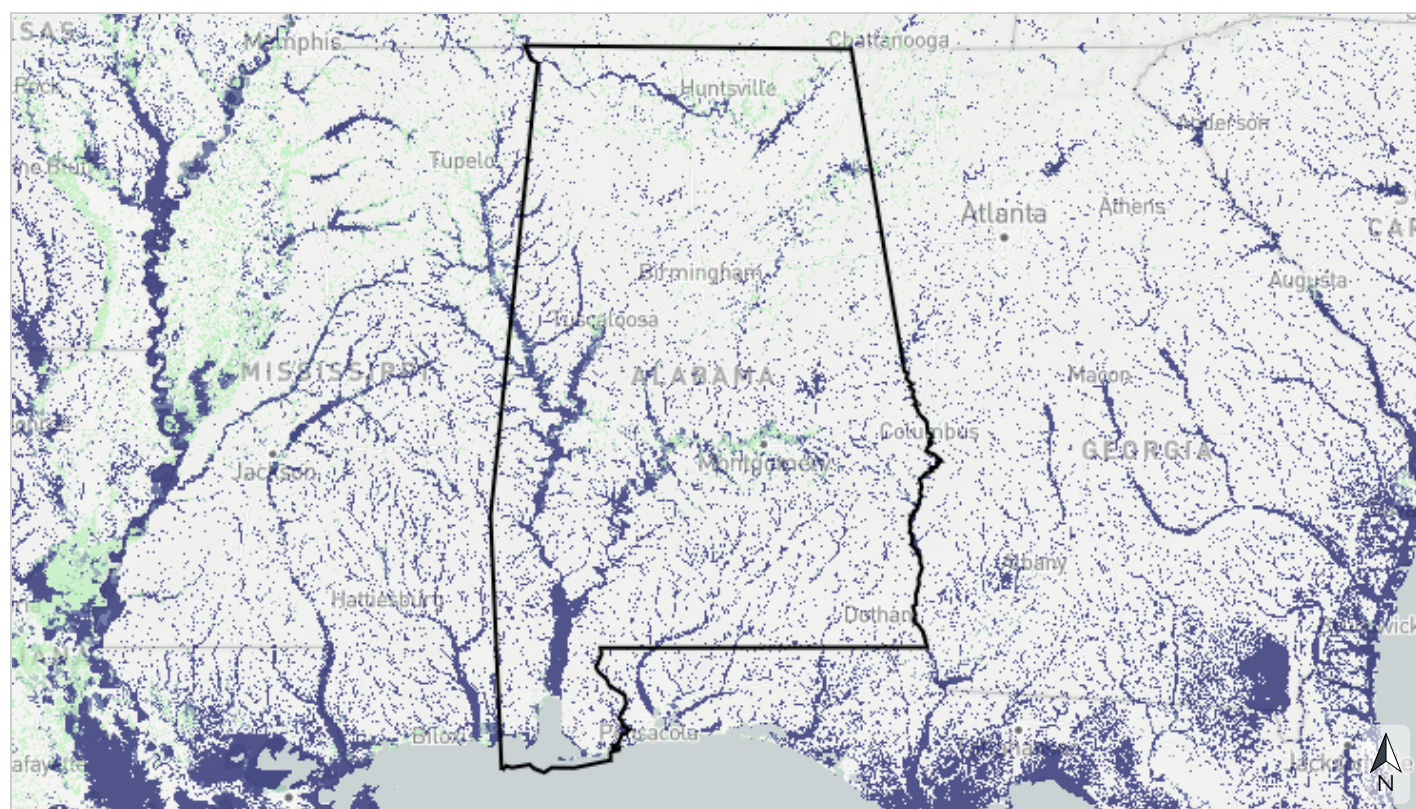
To learn more and explore the GIS data, [view this indicator in the SECAS Atlas](#).



Freshwater

Natural landcover in floodplains

This indicator measures the amount of natural landcover in the estimated floodplain of rivers and streams within each catchment. It assesses the stream channel and its surrounding riparian buffer, measuring the percent of unaltered habitat like forests, wetlands, or open water (rather than agriculture or development). Intact vegetated buffers within the floodplain of rivers and streams provide aquatic habitat, improve water quality, reduce erosion and flooding, recharge groundwater, and more. This indicator originates from the 2019 National Land Cover Database and applies to the Environmental Protection Agency's estimated floodplain, which spatially defines areas estimated to be inundated by a 100-year flood, also known as the 1% annual chance flood.



Basemap credits: © Mapbox © OpenStreetMap [Improve this map](#)

64 129 257 miles

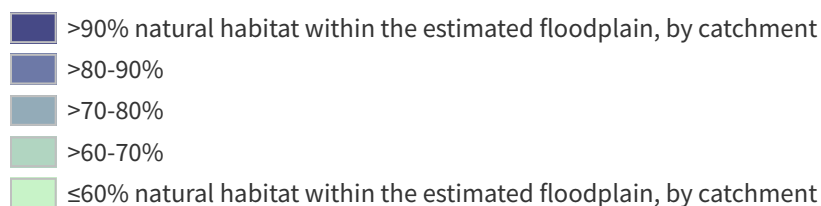


Table 19: Indicator values for natural landcover in floodplains in this area. Good condition thresholds reflect the range of indicator values that occur in healthy, functioning ecosystems.

	Indicator Values	Acres	Percent of Area	
↑ High	>90% natural habitat within the estimated floodplain, by catchment	3,162,123	9.4%	↑ In good condition
	>80-90%	572,953	1.7%	
	>70-80%	337,882	1.0%	
	>60-70%	264,057	0.8%	
↓ Low	≤60% natural habitat within the estimated floodplain, by catchment	757,519	2.3%	↓ Not in good condition
	Area not evaluated for this indicator	28,447,044	84.8%	
	Outside Southeast Blueprint	7,230	<0.1%	
	Total area	33,548,808	100%	

To learn more and explore the GIS data, [view this indicator in the SECAS Atlas](#).



Freshwater

Network complexity

This indicator depicts the number of different stream size classes in a river network not separated by dams or waterfalls. River networks with a variety of connected stream classes help retain aquatic biodiversity in a changing climate by allowing species to access climate refugia and move between habitats. This indicator originates from the Southeast Aquatic Resources Partnership and applies to the Environmental Protection Agency's estimated floodplain, which spatially defines areas estimated to be inundated by a 100-year flood, also known as the 1% annual chance flood.



Basemap credits: © [Mapbox](#) © [OpenStreetMap](#) [Improve this map](#)

64 129 257 miles



- 7 connected stream classes
- 6 connected stream classes
- 5 connected stream classes
- 4 connected stream classes
- 3 connected stream classes
- 2 connected stream classes
- 1 connected stream class

Table 20: Indicator values for network complexity in this area. Good condition thresholds reflect the range of indicator values that occur in healthy, functioning ecosystems.

	Indicator Values	Acres	Percent of Area	
↑ High	7 connected stream classes	714,857	2.1%	
	6 connected stream classes	1,374,837	4.1%	
	5 connected stream classes	1,917,737	5.7%	
	4 connected stream classes	482,437	1.4%	↑ In good condition
	3 connected stream classes	201,215	0.6%	↓ Not in good condition
	2 connected stream classes	228,665	0.7%	
↓ Low	1 connected stream class	116,242	0.3%	
	Area not evaluated for this indicator	28,505,587	85.0%	
	Outside Southeast Blueprint	7,230	<0.1%	
	Total area	33,548,808	100%	

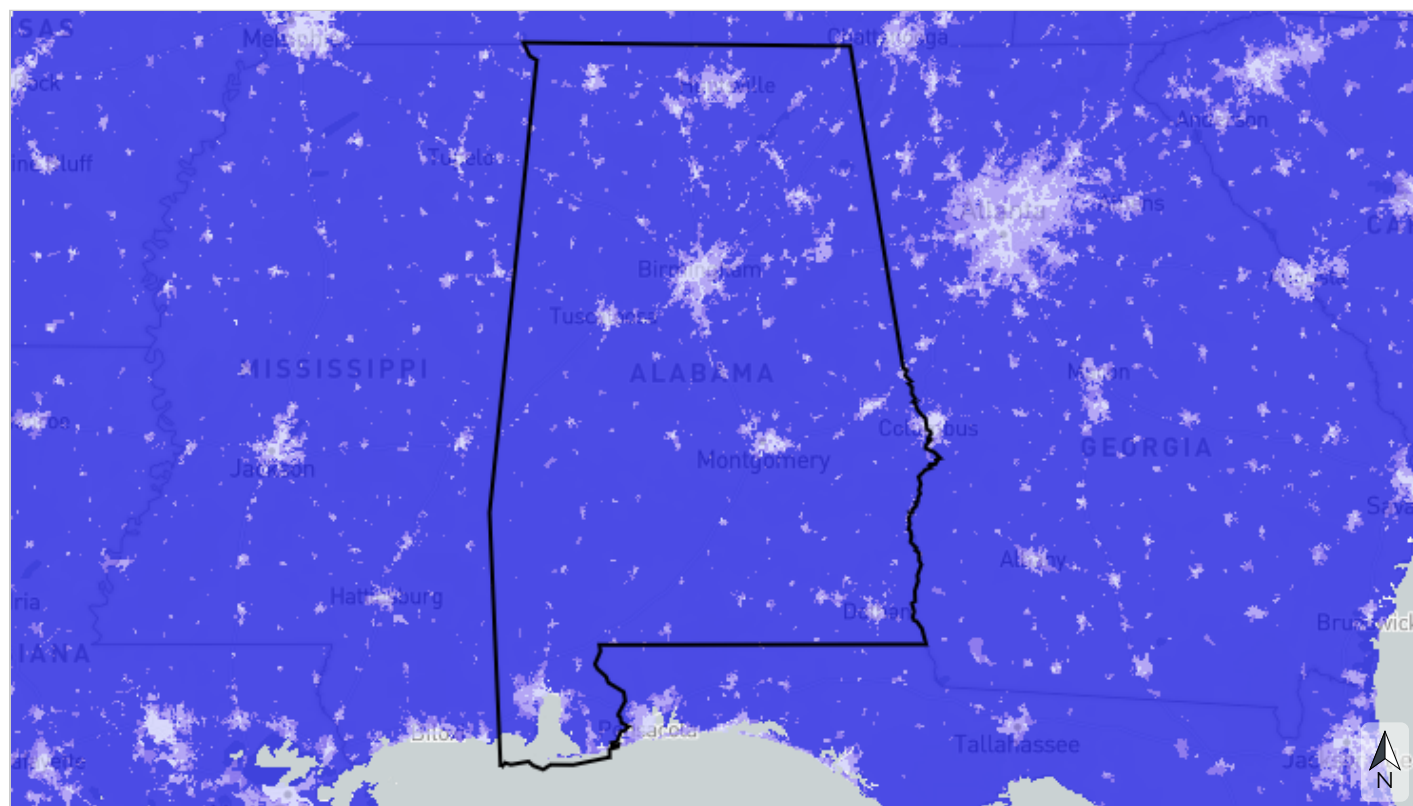
To learn more and explore the GIS data, [view this indicator in the SECAS Atlas](#).



Freshwater

Permeable surface

This indicator measures the average percent of non-impervious cover within each catchment. High levels of impervious surface degrade water quality and alter freshwater flow, impacting both aquatic species communities and ecosystem services for people, like the availability of clean drinking water. This indicator originates from the 2019 National Land Cover Database percent developed impervious layer.



Basemap credits: © Mapbox © OpenStreetMap [Improve this map](#)

64 129 257 miles



- >95% of catchment permeable (likely high water quality and supporting most sensitive aquatic species)
- >90-95% of catchment permeable (likely declining water quality and supporting most aquatic species)
- >70-90% of catchment permeable (likely degraded water quality and not supporting many aquatic species)
- ≤70% of catchment permeable (likely degraded instream flow, water quality, and aquatic species communities)

Table 21: Indicator values for permeable surface in this area. Good condition thresholds reflect the range of indicator values that occur in healthy, functioning ecosystems.

	Indicator Values	Acres	Percent of Area	
↑ High	>95% of catchment permeable (likely high water quality and supporting most sensitive aquatic species)	30,432,352	90.7%	↑ In good condition
	>90-95% of catchment permeable (likely declining water quality and supporting most aquatic species)	1,126,810	3.4%	↓ Not in good condition
	>70-90% of catchment permeable (likely degraded water quality and not supporting many aquatic species)	1,208,729	3.6%	
↓ Low	≤70% of catchment permeable (likely degraded instream flow, water quality, and aquatic species communities)	284,656	0.8%	
	<i>Area not evaluated for this indicator</i>	<i>489,032</i>	<i>1.5%</i>	
	<i>Outside Southeast Blueprint</i>	<i>7,230</i>	<i><0.1%</i>	
	Total area	33,548,808	100%	

To learn more and explore the GIS data, [view this indicator in the SECAS Atlas](#).



Coastal & marine

Coastal shoreline condition

This indicator assesses shoreline condition based on the presence of hardened structures like jetties, groins, and riprap, as well as other human development. By restricting the natural movement of sediment, shoreline armoring increases erosion, prevents the inland migration of coastal ecosystems in response to sea-level rise, and degrades habitat for birds, sea turtles, fish, plants, and other species both on and offshore. Natural shorelines in harder-to-develop coastal areas receive the highest shoreline condition scores, while hardened shorelines receive the lowest scores. This indicator originates from the National Oceanic and Atmospheric Administration's Environmental Sensitivity Index dataset.



Basemap credits: © [Mapbox](#) © [OpenStreetMap](#) [Improve this map](#)

64 129 257 miles



- Natural and harder to develop
- Natural
- Partially armored and harder to develop
- Partially armored
- Armored

Table 22: Indicator values for coastal shoreline condition in this area. Good condition thresholds reflect the range of indicator values that occur in healthy, functioning ecosystems.

	Indicator Values	Acres	Percent of Area	
↑ High	Natural and harder to develop	1,673	<0.1%	
	Natural	17,564	<0.1%	↑ In good condition
	Partially armored and harder to develop	16	<0.1%	↓ Not in good condition
	Partially armored	829	<0.1%	
↓ Low	Armored	2,256	<0.1%	
	Area not evaluated for this indicator	33,519,241	99.9%	
	Outside Southeast Blueprint	7,230	<0.1%	
	Total area	33,548,808	100%	

To learn more and explore the GIS data, [view this indicator in the SECAS Atlas](#).



Coastal & marine

Estuarine coastal condition

This indicator combines measures of water quality, sediment quality, contaminants in fish tissue, and benthic community condition to create an overall index of coastal estuarine condition. Estuaries serve as important nursery habitat for wildlife, including many species of fish and shellfish eaten as seafood. They also improve water quality by filtering out sediments and pollutants, provide recreational opportunities, and support coastal economies. This indicator originates from the Environmental Protection Agency's National Coastal Condition Assessment data.

Basemap credits: © [Mapbox](#) © [OpenStreetMap](#) [Improve this map](#)

- Good
- Good to fair
- Fair
- Fair to poor
- Poor

Table 23: Indicator values for estuarine coastal condition in this area. Good condition thresholds reflect the range of indicator values that occur in healthy, functioning ecosystems.

	Indicator Values	Acres	Percent of Area	
↑ High	Good	7,174	<0.1%	
	Good to fair	187,720	0.6%	↑ In good condition
	Fair	210,039	0.6%	↓ Not in good condition
	Fair to poor	33	<0.1%	
↓ Low	Poor	0.22	<0.1%	
	Area not evaluated for this indicator	33,136,611	98.8%	
	Outside Southeast Blueprint	7,230	<0.1%	
	Total area	33,548,808	100%	

To learn more and explore the GIS data, [view this indicator in the SECAS Atlas](#).



Coastal & marine Islands

This indicator represents important habitat for island-dependent species across the Southeast. Because the isolation of islands can make them ecologically unique and protect them from disturbance and mainland predators, they often serve as important habitat for many species of mammals, plants, and insects, as well as breeding coastal birds and sea turtles. The highest scores go to island critical habitat for six threatened and endangered animal and plant species: piping plover, loggerhead sea turtle, Cape Sable thoroughwort, Florida semaphore cactus, silver rice rat, and Bartram's hairstreak butterfly. This indicator originates from U.S. Fish and Wildlife Service critical habitat data and island boundaries from the U.S. Geological Survey and Esri.



- Island critical habitat for any of six threatened and endangered species (piping plover, loggerhead sea turtle, Cape Sable thoroughwort, Florida semaphore cactus, silver rice rat, or Bartram's hairstreak butterfly)
- Island

Table 24: Indicator values for islands in this area. A good condition threshold is not yet defined for this indicator.

	Indicator Values	Acres	Percent of Area
↑ High	Island critical habitat for any of six threatened and endangered species (piping plover, loggerhead sea turtle, Cape Sable thoroughwort, Florida semaphore cactus, silver rice rat, or Bartram's hairstreak butterfly)	2,223	<0.1%
↓ Low	Island	32,054	<0.1%
	<i>Area not evaluated for this indicator</i>	33,507,300	99.9%
	<i>Outside Southeast Blueprint</i>	7,230	<0.1%
	Total area	33,548,808	100%

To learn more and explore the GIS data, [view this indicator in the SECAS Atlas](#).



Coastal & marine

Resilient coastal sites

This indicator depicts the capacity of coastal habitats to migrate to adjacent lowlands in order to sustain biodiversity and natural services under increasing inundation from sea-level rise. It is based on the physical and condition characteristics of current tidal complexes, their predicted migration space, and surrounding buffer areas. These characteristics include marsh complex size, shared edge with migration space, sediment balance, water quality, natural landcover, landform diversity, and many others. This indicator originates from The Nature Conservancy's Resilient Coastal Sites project.



Basemap credits: © [Mapbox](#) © [OpenStreetMap](#) [Improve this map](#)

64 129 257 miles



- Most resilient
- More resilient
- Slightly more resilient
- Average/median resilience
- Slightly less resilient
- Less resilient
- Least resilient

Table 25: Indicator values for resilient coastal sites in this area. A good condition threshold is not yet defined for this indicator.

	Indicator Values	Acres	Percent of Area
↑ High	Most resilient	0	0%
	More resilient	199,726	0.6%
	Slightly more resilient	29,493	<0.1%
	Average/median resilience	20,549	<0.1%
	Slightly less resilient	591	<0.1%
	Less resilient	804	<0.1%
↓ Low	Least resilient	397	<0.1%
	Area not evaluated for this indicator	33,290,017	99.2%
	Outside Southeast Blueprint	7,230	<0.1%
	Total area	33,548,808	100%

To learn more and explore the GIS data, [view this indicator in the SECAS Atlas](#).



Coastal & marine

Seagrasses

This indicator represents the presence of seagrass in the Atlantic Ocean and Gulf of Mexico. Seagrasses provide food and habitat for a range of marine and estuarine wildlife, including fish, sea turtles, shrimp, crabs, oysters, and more. They also produce oxygen, filter water, control erosion, and buffer storms. Seagrasses serve as an important indicator of the overall health of coastal ecosystems because they are sensitive to water quality and require sufficiently clear water for sunlight to penetrate. This indicator originates from the National Oceanic and Atmospheric Administration's Marine Cadastre.

Basemap credits: © [Mapbox](#) © [OpenStreetMap](#) [Improve this map](#)

64 129 257 miles

 Seagrasses present

Table 26: Indicator values for seagrasses in this area. A good condition threshold is not yet defined for this indicator.

	Indicator Values	Acres	Percent of Area
↑ High	Seagrasses present	9,312	<0.1%
	Area not evaluated for this indicator	33,532,266	100.0%
	Outside Southeast Blueprint	7,230	<0.1%
	Total area	33,548,808	100%

To learn more and explore the GIS data, [view this indicator in the SECAS Atlas](#).



Coastal & marine

Stable coastal wetlands

This indicator uses remote sensing to calculate the unvegetated-vegetated ratio of tidal wetlands, which compares how much of a wetland is not covered by plants (e.g., sediment, rocks, open water) to how much is covered by plants. This ratio, and how it changes over time, is a good surrogate for salt marsh degradation processes like sediment loss and conversion to open water. It helps differentiate between stable marshes that are more resilient, and declining marshes that are more vulnerable to threats like sea-level rise, erosion, and coastal development. This indicator originates from a U.S. Geological Survey project on an unvegetated to vegetated ratio for coastal wetlands.

Basemap credits: © [Mapbox](#) © [OpenStreetMap](#) [Improve this map](#)

64 129 257 miles

 Stable coastal wetlands

Table 27: Indicator values for stable coastal wetlands in this area. Good condition thresholds reflect the range of indicator values that occur in healthy, functioning ecosystems.

	Indicator Values	Acres	Percent of Area	
↑ High	Stable coastal wetlands	41,605	0.1%	↑ In good condition
	Area not evaluated for this indicator	33,499,973	99.9%	
	Outside Southeast Blueprint	7,230	<0.1%	
	Total area	33,548,808	100%	

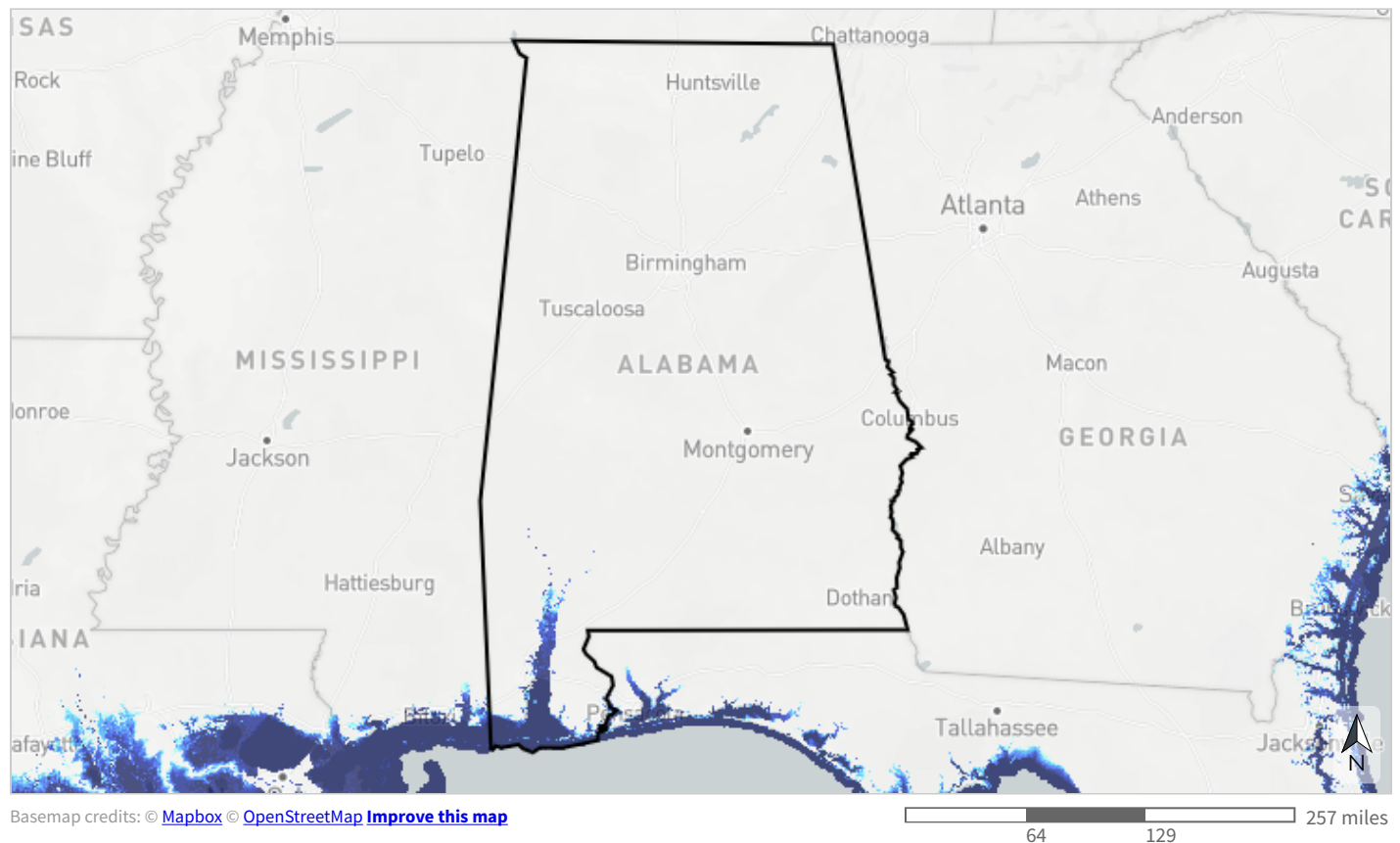
To learn more and explore the GIS data, [view this indicator in the SECAS Atlas](#).

Threats

Sea-level rise

NOAA's sea-level rise (SLR) inundation models represent areas likely to experience flooding at high tide based on each foot of inundation depth above current levels. These inundation depth models are not linked to a future timeframe; see the projections below. NOAA calculates the inundation depth at "mean higher high water", or the average highest daily tide. The area covered by each inundation depth level includes areas projected to be inundated at lower levels. For example, areas inundated by 4 ft of SLR also includes areas inundated by 3 ft, 2 ft, 1 ft, and current inundation levels.

To explore additional SLR information, please see NOAA's [Sea Level Rise Viewer](#).



Flooding extent by projected sea-level rise (ft)



Table 28: Extent of flooding by projected average highest daily tide due to sea level rise in this area. Values from the [NOAA sea-level rise inundation data](#).

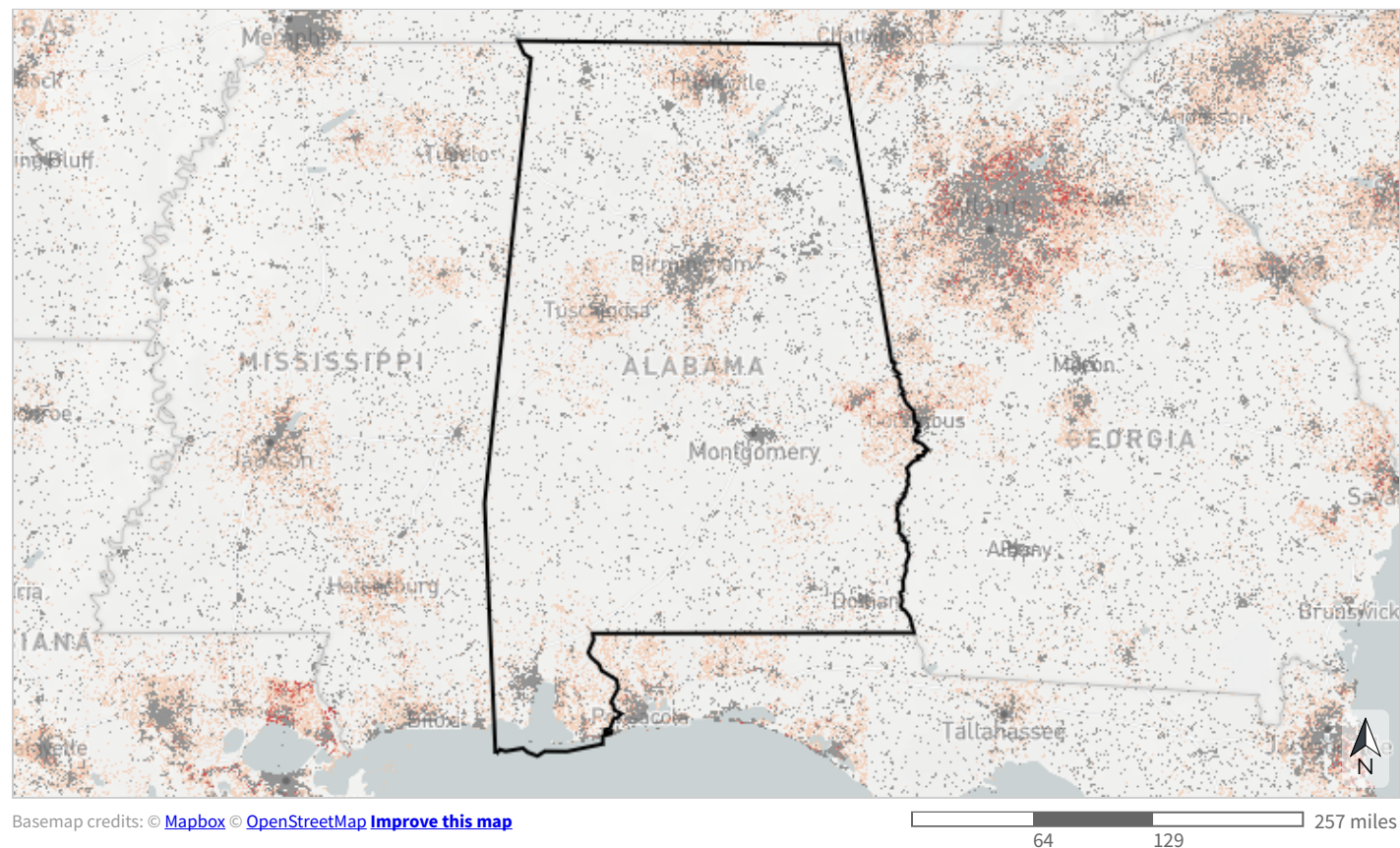
Feet of sea-level rise	Acres	Percent of Area
0 feet	543,919	1.6%
1 foot	600,787	1.8%
2 feet	648,252	1.9%
3 feet	678,222	2.0%
4 feet	698,296	2.1%
5 feet	715,257	2.1%
6 feet	732,750	2.2%
7 feet	750,230	2.2%
8 feet	767,285	2.3%
9 feet	788,564	2.4%
10 feet	807,048	2.4%
Not projected to be inundated by up to 10 feet	3,717,743	11.1%
Sea-level rise unlikely to be a threat (inland counties)	29,016,787	86.5%
Outside Southeast Blueprint	7,230	<0.1%
Total area	33,548,808	100%

Table 29: Projected sea level rise by decade in this area. Values are based on area-weighted averages of decadal projections for 1-degree grid cells that overlap this area based on [NOAA's 2022 Sea Level Rise Report](#). 2060 corresponds to the [SECAS goal](#): a 10% or greater improvement in the health, function, and connectivity of Southeastern ecosystems by 2060.

SLR Scenario	2020 (ft)	2030 (ft)	2040 (ft)	2050 (ft)	2060 (ft)	2070 (ft)	2080 (ft)	2090 (ft)	2100 (ft)
Low	0.28	0.44	0.6	0.76	0.89	1	1	1.1	1.2
Intermediate-low	0.31	0.5	0.7	0.89	1	1.2	1.4	1.6	1.8
Intermediate	0.31	0.52	0.75	1	1.3	1.6	2.1	2.6	3.3
Intermediate-high	0.32	0.55	0.84	1.2	1.7	2.3	3.1	3.9	4.8
High	0.32	0.56	0.91	1.4	2.1	3	4.1	5.2	6.4

Urban growth

The FUTURES urban growth model predicts the likelihood that an area will urbanize at every decade from 2020 to 2100. Developed areas from the 2019 National Landcover Database serve as the baseline for current urban areas. The model simulates landscape change based on trends in population growth, local development suitability factors, and an urban patch-growing algorithm. It considers environmental drivers like distance to floodplain, slope, and available infrastructure, and even socio-economic status. The probability of urbanization for each area reflects how many times it urbanized out of 50 model runs.



Probability of urbanization by 2060

- Urban in 2019
- Very high likelihood of urbanization (>50% probability)
- High likelihood of urbanization (25 - 50% probability)
- Moderate likelihood of urbanization (2 - 25% probability)
- Not likely to urbanize

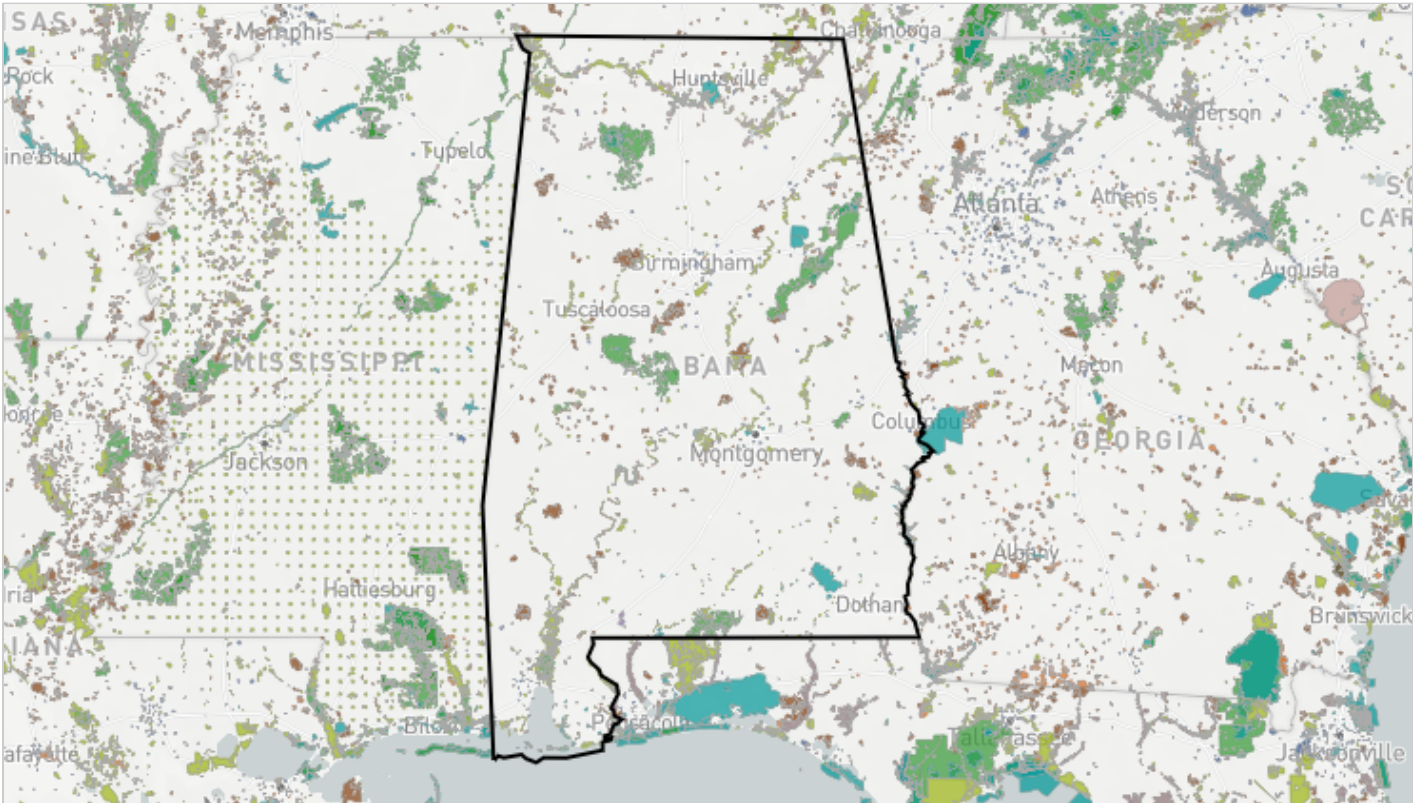
7.9% of this area is already urban in 2019, and an additional 7.4% has at least a moderate probability of urbanizing by 2060.

Table 30: Extent of projected urbanization by decade in this area. Values from the FUTURES urban growth model. Data provided by the [Center for Geospatial Analytics](#), NC State University. 2060 corresponds to the [SECAS goal](#): a 10% or greater improvement in the health, function, and connectivity of Southeastern ecosystems by 2060.

Decade	Acres	Percent of Area
Urban in 2019	2,647,817	7.9%
2020 projected extent	2,667,025	7.9%
2030 projected extent	2,709,668	8.1%
2040 projected extent	2,738,714	8.2%
2050 projected extent	2,756,865	8.2%
2060 projected extent	2,773,028	8.3%
2070 projected extent	2,786,855	8.3%
2080 projected extent	2,797,479	8.3%
2090 projected extent	2,805,227	8.4%
2100 projected extent	2,809,806	8.4%
<i>Not projected to urbanize by 2100</i>	28,127,388	83.8%
<i>Outside Southeast Blueprint</i>	7,230	<0.1%
Total area	33,548,808	100%

Ownership and Partners

Conserved lands ownership



Basemap credits: © Mapbox © OpenStreetMap [Improve this map](#)

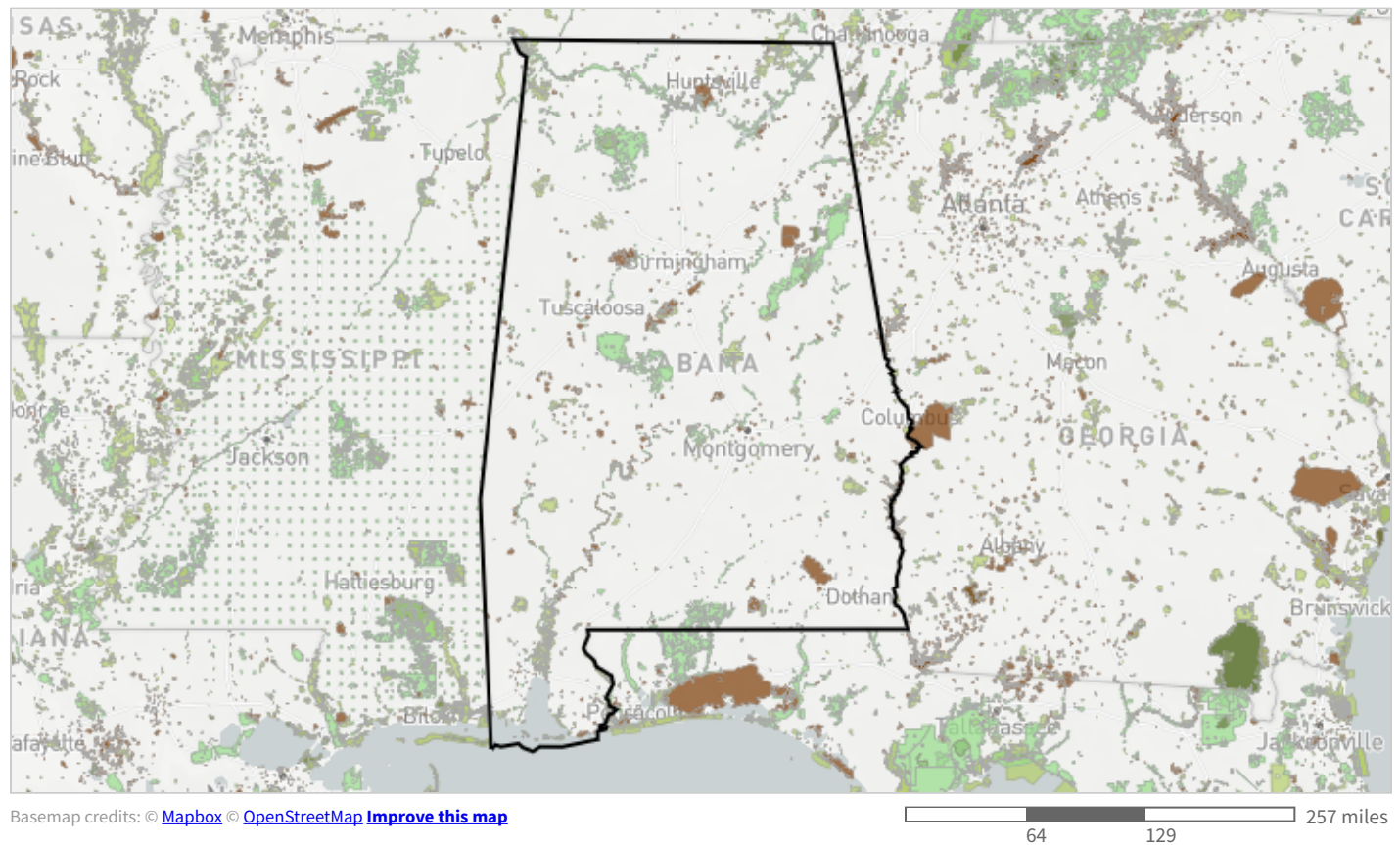


- | | |
|----------------|------------------------------------|
| Federal | Joint |
| State/province | Private non-profit conserved lands |
| Territorial | Private conservation land |
| Regional | Tribal |
| Local | Designation |
| | Ownership unknown |

Table 31: Extent of ownership class in this area. Protected areas are derived from the [Protected Areas Database of the United States](#) (PAD-US v3.0). Note: areas are based on the polygon boundary of this area compared to protected area polygons, rather than pixel-level analyses used elsewhere in this report.

Ownership	Acres	Percent of Area
Federal	752,829	2.2%
State/province	620,945	1.9%
Regional	352	<0.1%
Local	33,830	0.1%
Joint	72	<0.1%
Private non-profit conserved lands	15,114	<0.1%
Private conservation land	409,092	1.2%
Tribal	4,085	<0.1%
Designation	281,648	0.8%
Ownership unknown	156,050	0.5%
<i>Not conserved</i>	31,274,782	93.2%
Total area	33,548,799	100%

Land protection status



- Managed for biodiversity (disturbance events proceed or are mimicked)
- Managed for biodiversity (disturbance events suppressed)
- Managed for multiple uses (subject to extractive uses such as mining or logging, or OHV use)
- No known mandate for biodiversity protection

Table 32: Extent of land protection status in this area. Protected areas are derived from the [Protected Areas Database of the United States](#) (PAD-US v3.0). Note: areas are based on the polygon boundary of this area compared to protected area polygons, rather than pixel-level analyses used elsewhere in this report.

Land Protection Status	Acres	Percent of Area
Managed for biodiversity (disturbance events proceed or are mimicked)	102,009	0.3%
Managed for biodiversity (disturbance events suppressed)	564,898	1.7%
Managed for multiple uses (subject to extractive uses such as mining or logging, or OHV use)	1,057,831	3.2%
No known mandate for biodiversity protection	549,280	1.6%
<i>Not conserved</i>	31,274,782	93.2%
Total area	33,548,799	100%

Protected Areas

- National Forests in Alabama (USDA FOREST SERVICE; 672,630 acres)
- State-owned Submerged Lands (State of Alabama; 209,387 acres)
- Fort Rucker AL (58,126 acres)
- Redstone Arsenal (38,180 acres)
- FW 15 - Mobile-Tensaw Delta Tract (Alabama Forever Wild Land Trust; 35,627 acres)
- FW 71 - Mulberry Fork WMA Tract (Alabama Forever Wild Land Trust; 33,457 acres)
- FW 20 - Lauderdale and Freedom Hills WMA Tract Additions (Alabama Forever Wild Land Trust; 31,893 acres)
- FW 72 - Cahaba River WMA Tract (Alabama Forever Wild Land Trust; 28,434 acres)
- Guntersville Reservoir Retained Land (Unknown; 25,886 acres)
- Sipsey Wilderness (25,853 acres)
- WALTER F. GEORGE (Unknown; 24,272 acres)
- Mobile-Tensaw Delta Wildlife Management Area (US Corps of Engineers; 22,468 acres)
- NG Pelham Range Training Site - Fort McClellan (22,225 acres)
- Barbour Wildlife Management Area (ADCNR, Division of Wildlife and Freshwater Fisheries; 20,965 acres)
- Scotch Wildlife Management Area (Private Landowner; 19,754 acres)
- Coosa Wildlife Management Area (Private Landowners; 19,195 acres)

- W. L. Holland Wildlife Management Area (ADCNR, Division of Wildlife and Freshwater Fisheries; 19,188 acres)
- Walter F. George Lake (19,052 acres)
- James D. Martin - Skyline Wildlife Management Area (ADCNR, Division of Wildlife and Freshwater Fisheries; 18,908 acres)
- Wheeler NWR (Unknown; 18,851 acres)
- Frank W. and Rob M. Boykin Wildlife Management Area (Private Landowner; 18,614 acres)
- Sam R. Murphy Wildlife Management Area (Private Landowner; 17,821 acres)
- Wheeler Reservoir Retained Land (Unknown; 16,536 acres)
- Jackson County Waterfowl Area and Refuge (Unknown; 16,198 acres)
- Anniston Army Depot (15,578 acres)
- ... and 1,928 more protected areas ...

Nearby land trusts

[Click here](#) to search for land trusts within 250 miles of this area on the Land Trust Alliance website.

Credits

This report was generated by the Southeast Conservation Blueprint Explorer, which was developed by [Astute Spruce, LLC](#) in partnership with the U.S. Fish and Wildlife Service under the [Southeast Conservation Adaptation Strategy](#).

Data credits

Urbanization data are derived from the FUTURES urban growth model. Data provided by the [Center for Geospatial Analytics](#), NC State University (June 2022).

Sea level rise data are derived from the National Oceanic and Atmospheric Administration's [Sea Level Rise Inundation Depth Data](#) and the [2022 Sea Level Rise Technical Report](#).

Land ownership and conservation status is derived from the [Protected Areas Database of the United States](#) (PAD-US v3.0).